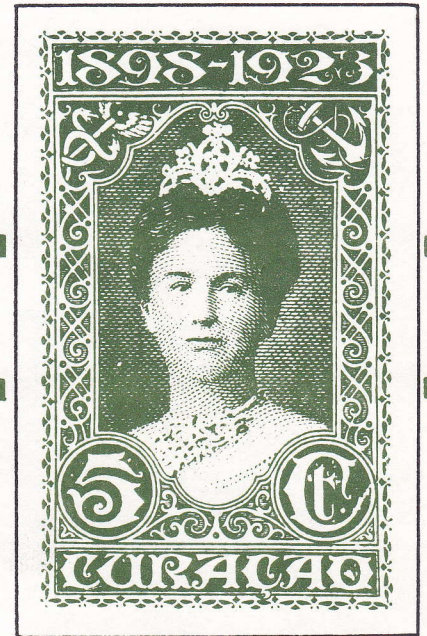


Sept 1993

NETHERLANDS PHILATELY



JOURNAL of the American Society for Netherlands Philately

Volume 18
1

ASN P



A non-profit organization registered
in the State of Illinois
Founded in 1975 by Paul E. van Reyen

Netherlands Philately

THE JOURNAL OF THE AMERICAN SOCIETY FOR NETHERLANDS
PHILATELY

Volume 18, Number 1

September 1993

Editorial Board

Frank W. Julsen
Laurence H. Rehm
Dr F.H.A. Rummens
C. Slofstra

Board of Governors

E. Matthews, Oakville, Ontario
Dr. Fred I. Reed, New York
Cees Slofstra, Eindhoven
Frank W. Julsen, Arizona

President

Reinder van Heuveln
3905 Midlothian Pike
Richmond, VA 23224

Vice President

Laurence H. Rehm
1734 Leisure World
Mesa, AZ 85206

Membership Secretary

Jan Enthoven
W6428 Riverview Drive
Onalaska, WI 54650

Corresponding Secretary

Marinus Quist
124 Country Club Drive
Covington, LA 70433

Treasurer/Advertising Manager

Harold F. MacDonald
2354 Roan Lane
Walnut Creek, CA 95496

Journal Staff

Editor: Paul E. van Reyen

Wordprocessing and Graphics:
Dilia C.M. Rummens
Photography: L.H. Rehm
Publisher: Jan Enthoven

Newsletter

Editor: Frans H.A. Rummens
94 Munroe Place
Regina Sask
Canada S4S 4P7

Bookstore Manager

Fernand H. Mollenkramer
6301 Downey Avenue
Long Beach, CA 90805

Librarian

HansPaul Hager
3695 El Grande Drive
San Jose, CA 95132

British Representative

Richard Wheatley

German Representative

Hans Wicher

FROM THE EDITOR

As we are heading into Volume 18 and into a new philatelic season, we can present you with some interesting reading material. We will lead off with an article by Paul van Reyen on the Moesman reprints of the 10 ct of the 1852 issue. Most of us know about the tiny note in the NVPH catalogue on this subject, but the story behind it is all but tiny. Even after considerable sleuthing (by Paul and by many others before him) not all the facts have surfaced. Still, this article presents a very complete and critical review of what is known; as such it is unique in its kind.

Oddly enough perhaps, we have a second article on the first issue of the Netherlands, this time on the *langstempel* cancellations of these stamps, complete with a listing of all such cancellations known. We thank author Fred Reed for this most thorough piece of research, but we also thank Mr. A. Hagemans for permission to print this contribution in *Netherlands Philately* simultaneously with its publication in the 1994 NVPH Special Catalogue.

Vice President Larry Rehm compiled a cumulative index for Volumes 1-17 of this Journal. We are planning to publish this number in such a fashion that the Index will be on the center eight pages. Therefore, members can lift out this Index, without interference with other articles. The Index can then be kept at hand, while the Journal number stays whole. We recommend to all members to scan through this Index, just to get an idea of the great wealth of philatelic information that is available in *N.P.*

Another timely contribution is the article by Hans Kremer on the reverse alphabetical listing of the Dutch *Grootrondstempels* (large round cancels). We will use this article as "filler", so as to precisely fill the available pages, without bleeding over into the inside cover and without leaving blank space.

A smaller contribution, consisting of a book review, will help to bring this issue to the extra thick, 24-page format, that we have chosen this time.

Frans Rummens
(Editor pro tem for life)

Table of Contents

The Moesman Reprints of the 10 Cent 1852 Issue.....	2	De "Langstempel" on the Netherlands 1852 Emission.....	17
Cumulative Index by Subject Matter. Volumes 1 through 17, 1975-1993.....	9	Book Review.....	20
		Reverse Alphabetical Listing of Nether- lands Large Round Cancels	21

Netherlands Philately is published quarterly by the American Society for Netherlands Philately.
©Copyright 1993, the American Society for Netherlands Philately.

(Opinions expressed in the various articles in this journal are those of the writers and not necessarily endorsed by ASN P or this journal.)

ASN P is Affiliate No. 60 of APS.

Advertising rates are \$80 for a full page, \$45 for a half page and \$25 for a quarter page.

THE MOESMAN REPRINTS OF THE 10 CENT 1852 ISSUE.

by Paul E. van Reyen

(Editor: this has been a very difficult article to write and it has been almost equally difficult to edit. In many cases the original magazine texts were not available. Available in most cases were photocopies of type-written or hand-written copies of the original articles, without proper literature reference. We don't know whether these copies were made with the required accuracy. In several cases there appeared to be errors in transcription. As a translator your editor often improves on the original text, but this time he has refrained from that. Presumed errors and clumsy Dutch in direct quotations were translated as such, with an editorial warning after the most blatant errors. English language sources were quoted verbatim in the smallest detail. The result often was clumsy and inconsistent English; we apologize for that but hope that this editorial preface will prevent the reader from getting irritated over the language and the seemingly disjointed story. The interested reader will find that he needs to read this article at least three times to get the sequence of events right and to separate in his mind facts from presumption and outright fiction.)

Those of you who are members of the American Philatelic Society and receive *The American Philatelist* have been able these past years to read the English translation of the *Serrane Guide* in which European (and now also non-European) classic stamps are described and valued. As a matter of fact, the Netherlands was described in the January 1991 issue of *The American Philatelist* (pages 53-57).

In going through these various instalments it must have struck you that so many countries show reprints made officially or semi-officially from the original plates or from specially prepared plates. Sometimes entire sets were thus reprinted. Luckily, the Netherlands had only one reprint, described on page 155 of the *Serrane Guide* (A.P. Jan. '91) as follows:

"Moesman (1895). Plate IV of the 10-cent, not very clear-cut impression; thick, unwatermarked, white paper. Various shades. Other reprints, which were made from a lithographic reproduction of a block of twenty-five stamps of Plate IV, have the word "NADRUCK" (*sic*) on their back."

The NVPH Special Catalogue (1992) states: "Reprints (*herdrukken*). In 1895, J.A. Moesman, Utrecht, made non-official reprints in some eleven different colors on various kinds of paper without watermark from the plate IV of the 10 cent, which was found in bad condition." See Figure 1.

Under "Nadrukken" (also translated by "reprints" in the dictionary) the NVPH says: "Lithographic reproductions of the 10 cent plate IV in green on coated paper, without watermark, with the word NADRUK on the back are worthless." (Just try to buy a copy of this green reproduction from a Dutch



Figure 1. A pair of Moesman reprints in red, from the top of the sheet.

stamp dealer to find out how "worthless" it is!) See also Figure 2.

The *Manual* by A. Arthur Schiller and Johannes de Kruyf (1940) only adds to the information given above: "Some of the stamps bear the imprint on the back: "New printing from the original plate, made in 1895 by Joh. A. Moesman (in Dutch)." See Figure 3.

In *Netherlands and Colonial Philately* (Vol. XX, No. 3) of July 1, 1955, Pierre K. Plantinga had an article "The Moesman Reprints," where we find some new information which might be considered to be the knowledge about these reprints then current in the U.S. What follows is quoted from this article:

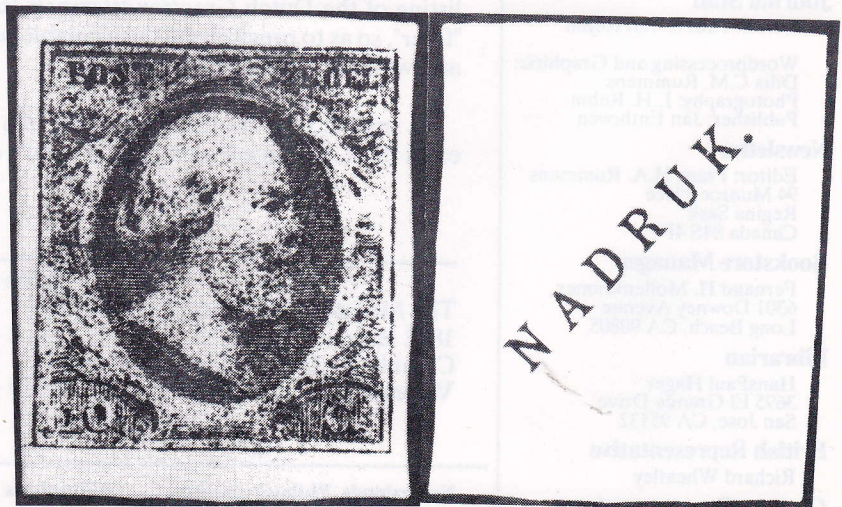


Figure 2. A copy of the green lithographic reprint from the "premium print". Note the word "NADRUK." on the back.



Figure 3. Block of six reprints (Figure 3a) with the text on the back (Figure 3b); of the reprints we show these are the only ones which have this printing on the back. (Collection L. Rehm)

"In 1895 a Dutch philatelic society (Editor: the NVvPV, the Netherlands Society for Stamp Collectors, see below) discovered that one of the original plates of the first issue, still existed at the mint. Furthermore, the society decided that as long as they were going to issue a copy of their "Standard Work" to their members, it would be nice to present them with a copy of a pane from this plate. Arrangements were made and the plate was borrowed and entrusted to the lithographer, Mr. Joh. A. Moesman, of Utrecht, who happened to be a member of the society.

It was at this point that Mr. Moesman took the liberty of printing several sheets of these reprints in different colors, and offered them for sale in his shop window. One of the officials of the mint saw the reprints in the window and became quite indignant. He demanded the return of the plate and the immediate burning of the reprints. By this time, however, hundreds of copies of the re-impressions had already been sold.

Eventually, the Dutch philatelic society convinced the mint officials that a recurrence of this nature would not happen and, therefore, were able to borrow the plate again. This time, the plate was entrusted to a different printer who made the final reprints to be issued with the "Standard Work". Upon completion, the plate was returned to the official archives at The Hague."

Other information, not always correct, was also given. Here for the first time four covers are mentioned, each with a differently colored reprint, blue, red, and orange (see Figure 4), and green (see Figure 5). Of interest is that,

according to Mr. Plantinga, fifty years before (that is, around 1905), it was considered that the Moesman reprints were printed from plate III rather than from plate IV.

Exactly six months later, in *Netherlands and Colonial Philately* (Vol. XXI, No. 1), of January 1, 1956, Louis Frank, an Australian member of N.C.P., commented on Mr. Plantinga's article. While Mr. Plantinga had thought that all Moesman reprints had been based on the top two panes, Mr. Frank mentioned that he had a complete sheet, "100 impressions, in four panes, and the top panes are distinctly different from the bottom panes." Unfortunately, he did not mention the color of the complete sheet. However, he also had a complete sheet printed in black. He was convinced that these two sheets were prints from an engraved plate and not lithographic copies. See Figure 6.

He also had in his collection a post card, which "has a 10 cent stamp printed on the lefthand side in black" (Ed: he obviously meant a black reprint stamp affixed on the card; presumably there was also a

regular stamp in the right hand top corner), sent to a member of the Netherlands Society of Stamp Collectors, with the following hand-lettered printed message on the back (in translation):

WARNING

Dear Sir:

The 1/4 sheet of the 1st issue Netherland 10 ct distributed by the Netherlands Society of Stamp Coll. under the name of Reprint from the Original Plate, has not been printed from the original plate, but is a reproduction, as such completely without value, as are all pictures (*afbeeldingen*) of stamps.

There are still a few GENUINE reprints of the original plate available from the undersigned at 75 ct each, post paid after receipt of amount.

JOH. A. MOESMAN
Neude 7 - Utrecht

Mr. Frank draws the conclusion that the lithographed pane of 25 in green was not printed by Moesman.

Mr. Frank had in his collection Moesman reprints on hard cardboard paper and on very thin paper. Also prints in black printed on the back of a newspaper, which I would be sure were proofs. As for colors, he had red in three different shades, dark green, grayish green, and olive green, brown, orange, gray, yellow, and black. According to him the printing on the back which is mentioned in the *Manual*

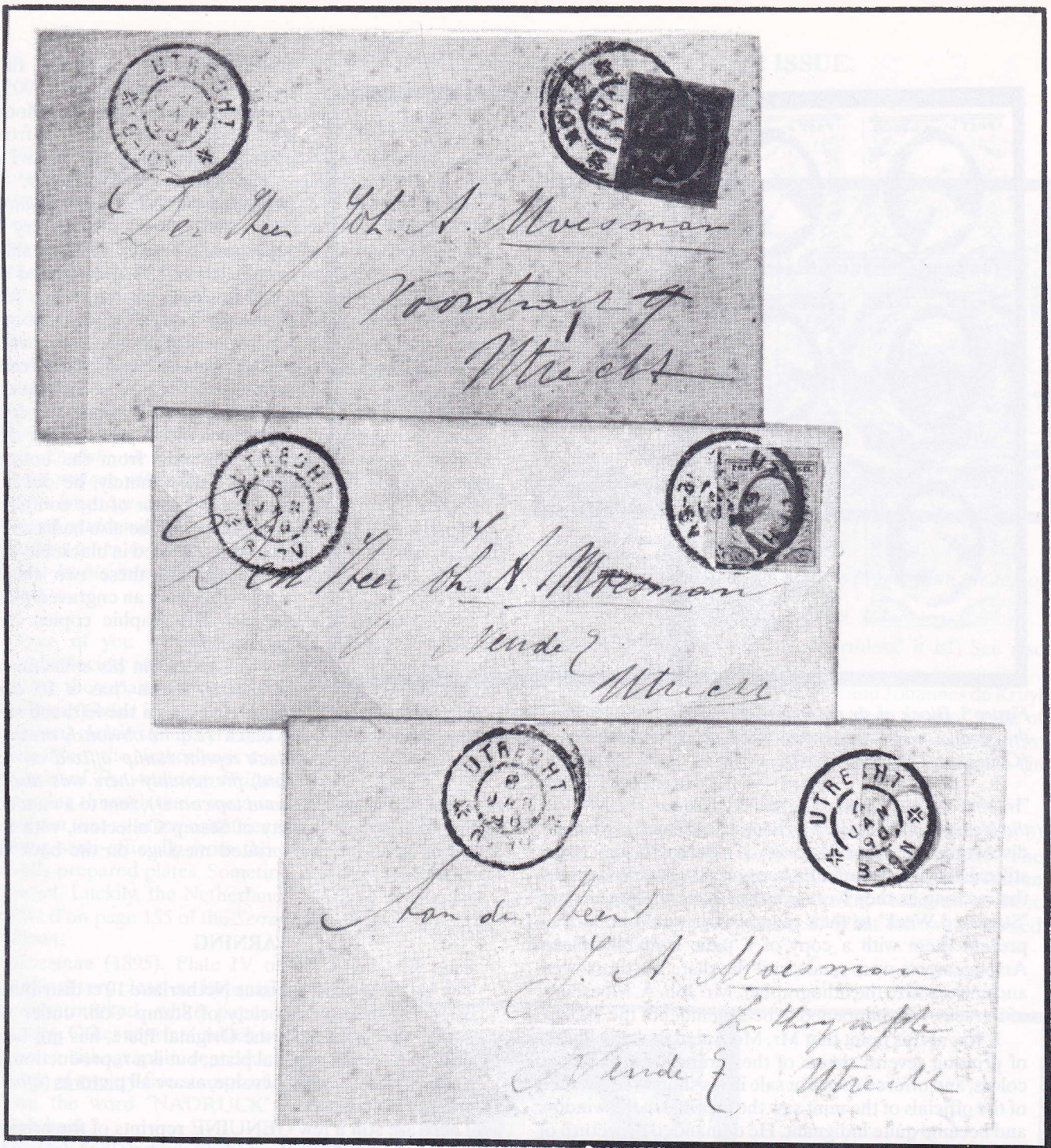


Figure 4. Three covers with Moesman reprints, fraudulently cancelled at Utrecht. The top one has a blue stamp, the center one a red stamp and the bottom one an orange stamp.

(see Figure 3b) was done at the request of the "Utrecht Philatelic Society". (Editor: this is the same Utrecht branch of the Netherlands Society for Stamp Collectors as mentioned above)

For me the most interesting part of Mr. Frank's comments lies in the following:

"There are also lithographic reproductions made by Mr. Moesman, and I have two of these panes, one in red and one in blue, in my collection. These are printed on the back of a sheet of paper which was made for some sort of bags, and in ornamental lettering reads:

Ter gelegenheid van het 20 jarig bestaan der Utrechtse Philatelisten vereeniging, September 1926, and in small letters: 'Lith. Joh. A. Moesman.' Translation: On the occasion of the 20th Anniversary of the Utrecht Philatelic Society, September 1926."

(Editor: note the erroneous translation; it should have said "Utrecht Society of Philatelists", a new club, quite distinct from the earlier mentioned NVvPV branch),

Mr. Plantinga did not comment on these "revelations" by Mr. Frank and the discussion in *N.C.P.* seemed closed. But the rumors continued. In 1966, in *Philatelie* (page 556)

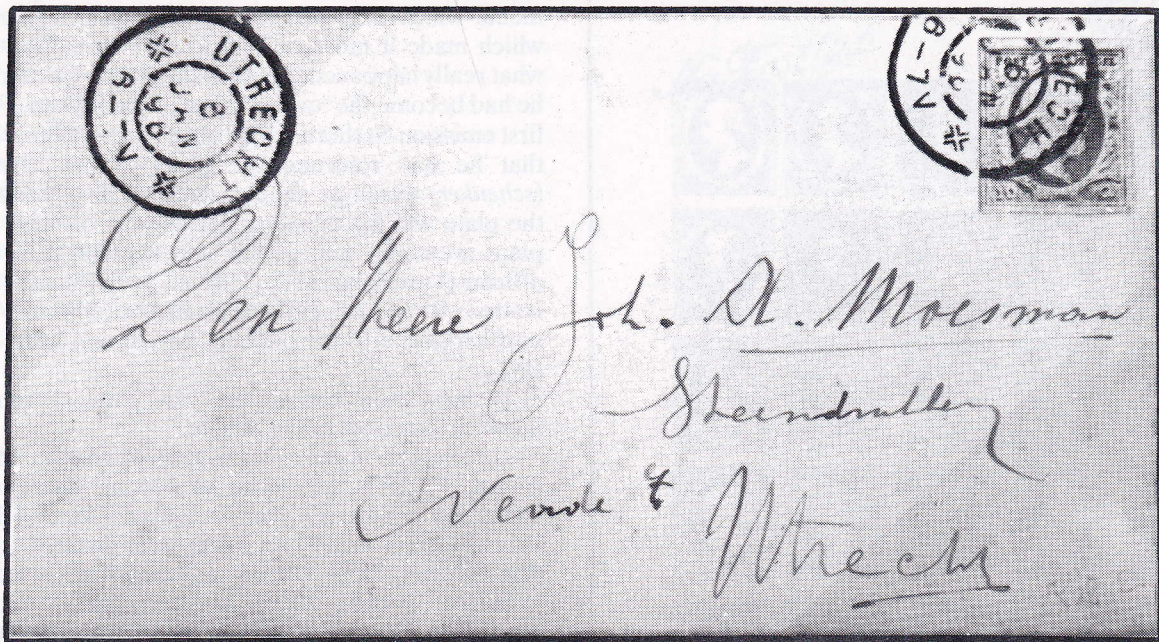


Figure 5. A cover with green lithographic reprint, likewise fraudulently cancelled at Utrecht on January 8, 1896.

somebody who will remain anonymous here told the readers that Mr. Moesman had found the plate in a garbage can outside the Mint in Utrecht.

What really happened in Utrecht in 1895? It seems clear that some "funny" activities took place, otherwise we would not have these different explanations with here and there some verifiable tidbits that sound as if they were made up after the fact.

On October 9-11, 1992, two philatelic societies in the Netherlands held a joint jubilee exhibition at Bussum. The catalogue had an interesting article, entitled "The Moesman Reprints, What Kind of Stamps are They?" This article was written by Hans Caarls and Frans Warmenhoven, both of whom did not hesitate to provide me with information and some exceedingly important archival material.

However, first we have to go back a little, to 1851 to be precise. As you know the first three stamps of the Netherlands were engraved and printed from steel plates which came from England. These plates were 280 mm long, 255 mm wide and 20 mm thick. And as you all know, 17 printing plates were used for the 1852 set; six for the 5 cent, 10 for the 10 cent, and one for the 15 cent. (I don't want to get involved in the 10 cent, plate 1A, right now.) To be honest, I always thought that 17 separate steel plates had been involved, but that is definitely not the case. What did happen is that when a plate was worn, the top few millimeters were shaved off and the plate was polished so that it was ready to get another 100



Figure 6. A whole sheet of reprints in black on fairly thick paper in a very poor condition. This must have been a proof print.



Figure 7. The complete pane of 25 lithographic reprints in green, the "premium print" of the Netherlands Society for Stamp Collectors. Note that the inscription at the bottom is lacking. Each stamp has the word "NADRUUK" on its back.

impressions positioned. By the time too much had already been shaved off, the steel plate was retired. Plate IV had been in use from October 12, 1855, to December 1856. The total Plate IV printing from this plate was 2 100 000 stamps of 10 cent. The plate was then put in storage in the archives of the Mint.

In 1894 the task of clearing the archives of the Mint began; several worn plates were found and these were all sold to a local blacksmith, Mr. Th. M. Verminnen, with the condition that these plates only be used to make chisels.

Mr. Johan A. Moesman was a printer in Utrecht, also a stamp collector and a member of the Utrecht branch of the Netherlands Society of Stamp Collectors, which had already been in existence since 1884. Mr. Moesman managed to acquire one of the plates, in this case plate IV, from the blacksmith and started to print sheets from the plate. He sold these reprints for the sum of 75 cents each, which was quite a bit of money for those days. When the above mentioned Utrecht stamp club found out what was going on, it held a meeting on June 9, 1895, during which the officers of the Society required Moesman to burn the reprints he had made. According to Moesman he had sold most of his reprints to Mr. D.E. Schreuders who, at the meeting, said he had burned about 2 000 reprints, all that he had left.

Mr. Moesman refused to burn his reprints and the Society by letter of June 24, 1895, threw him out! In a letter to the members of the Netherlands Society of Stamp Col-

lectors Mr. Moesman made several interesting statements which only served to muddy the trail, and which made it more difficult than ever to find out what really happened. First he stated that "by chance" he had become the "owner" of an original plate of the first emission Netherlands 10 cent. He then remarked that he had returned the plate to the "donor" (*schenker*) which he should not have done because the plate was his property. He then wrote that the plate eventually had gotten into the hands of two officers (I presume) of the Utrecht Society and at last landed with Mr. J.E. Bohlmeier in Amsterdam. What next happened to the plate he, Moesman, could not say.

We now know that eventually the plate was sent to the State Archives in the Hague.

In another communication, presumably dated August 17, 1895, Moesman wrote that he did not attach any value to the plate, because for several days after the plate came into his possession he did not print anything from it. It was only after he was asked to return the plate that he began to make as many reprints as he could. If we attach any value to these statements – which were nowhere else repeated – we can only surmise that *before* the meeting of June 9 someone (some people) had approached Moesman and requested the return of the plate (but to whom?).

Of course some rumors of this affair surfaced in the philatelic press. After all, a reprint from an original plate of the first emission of the Netherlands was NEWS. Moesman himself explained to a German stamp magazine (*Illustrierte Briefmarken Zeitung?*) that in 1895 (so this explanation must have dated from at least the following year) he had used the "only existing plate" of the 10 cent first emission to make the following reprints:

"In black on thin and thick paper; also on unsized paper and on newsprint. In blue on newsprint; in sepia on thick paper; in red-brown on thick paper; in red (carmine) on thick paper and on newsprint; in green on thick paper, as well as grayish green, green-black, orange red, orange yellow, brown orange and pale red, all on thick paper."

(Moesman was not too clear in his letter; the paper varieties were vaguely indicated by ditto marks.)

He wrote furthermore that the paper used was not water-marked and that all these stamps did *not* carry *any printing on the back*. This is substantiated by the absence of printing on most of the Moesman reprints we show.

Moesman also *explains* that the green reprints with the word NADRUUK on the back were made (but by whom?) from one of *his* reprints from the original plate. He very carefully does not say that he had printed these "Zincographical reproductions", which are known in green, in sheetlets of 25 copies, with an explanatory note at the bottom. As you can see, however, there is no such note at the bottom of the lithographic sheet which we show in Figure 7.

Finally, Moesman somewhere else writes that he also made lithographic reprints with "fat lithographic ink" which were used for various purposes. No colors are mentioned and the "purposes" are not explained.

In his 1895 letter to the members of the Utrecht stamp club he ended with a "warning" about a number of blank

sheets of watermarked paper that apparently existed at the time, so that the members ought to be careful with possible offers of mint stamps or proofs on watermarked paper. Presumably he refers here to reprints possibly made *after* the plate got out of his hands. What else?

All kinds of questions remain, of course, which were most carefully not touched upon in any of the remaining documentation. Mr. Plantinga's version about the discovery by the Netherlands Society for Stamp Collectors that one of the original plates still existed at the Mint obviously does not stand up. Neither does the rest of his explanations. We also would like to find out exactly *when* Mr. Moesman returned the plate, and to whom. His statement that the plate at last got into the hands of Mr. Bohlmeier in Amsterdam begins to make sense when we see that the 'premium print' (*premieplaat*) of 25 lithographed stamps was distributed with Volumes III and IV of the "*Standaardwerk over de Postwaarden van Nederland en zijne Koloniën*," which carries an issue date of June 1895. Mr. J.M. Bohlmeier was the Secretary of the Committee of Composition for this book and it seems extremely likely that he had the plate so that an Amsterdam printer could print the lithographic sheets of 25. If, as Mr. Moesman claims, the lithography was produced based on one of his reprints, it would not have been necessary to take the entire plate to Amsterdam. Unfortunately, however, we will never know for sure.

After all these years we know of reprints on thin paper, thick paper, cardboard, newsprint, and the paper used for playing cards.

And what about the colors? The NVPH catalogue says: 11 different colors. The article by Messrs. Caarls and Warmenhoven has eight colors (shades). One of our members

Na Postlijst



Lith. Joh. A. Moesman Utrecht.

*Van den Meer
H. B. J. Kaub
Utrecht
Pays-Bas.*



Figure 8. The Moesman 1926 invitation "cover". All cancels on the front are fake, as is the 10 cent reprint. Courtesy Mr. Frans Warmenhoven.

has thirteen copies (one pair) in blue, blue black, yellow, red, rose red, brown black, lilac brown, red brown, greenish blue, and light orange red. In giving you these colors we do not want to hold out that some of these colors may not have faded or changed in hue.

Mr. Moesman also prepared covers without contemporary stamps, but with reprints of his making, addressed to himself, and fraudulently cancelled at the Utrecht Post Office, with different dates: January 4, 6, and 8, 1896. On that last date he also managed to get a letter to himself cancelled, which had a green lithographic reprint. See Figures 4 and 5.

As you have seen from Mr. Frank's comments, Mr. Moesman was still "active" in 1926, when a Utrecht stamp club – not the one which threw him out in 1895 – celebrated its 20th anniversary. For this occasion he also prepared



Figure 9. Block of 25 Moesman reprints in brownish red, most likely one of the bottom panes of the sheet.

covers – actually invitations – with a fake stamp in blue or red, cancelled with a fake half-round postmark, and accompanied by fake "Na Posttijd" and "Utrecht" markings. The only legitimate cancel is that on the back, which is that of the Day of the Postage Stamp, September 4, 1926. Thanks to the generosity of Mr. Warmenhoven we can show you this piece in Figure 8. Finally, in Figures 9 and 10, we like to show you identical blocks of 25 of the Moesman reprint (see the center stamp) in brownish red and in black.

Was Mr. Moesman a crook? Contrary to the feeling in the Netherlands, I would not say so right away. At that time Fournier was actively working on his "facsimiles" of stamps, but he considered himself an artist, not a counterfeiter (see *Netherlands Philately* Vol. 7, No. 4). Sure, Moesman sold his reprints at a high price (*Editor: so did Fournier and quite openly so by advertising in philatelic magazines whose editors saw no reason to refuse these ads*). However, is that different from what any other businessman does? He must have known, however, that what he was doing was not "kosher", strictly speaking, since he was the first one to muddy the trail of what really happened at that time. I am

also wondering about the actions and non-actions by the Utrecht branch of the Netherlands Society for Stamp Collectors; were they only perturbed because Moesman made money out of this affair? To what extent were they involved? When did this idea of a "premium print" first surface in this Society? The documentation is silent on this point too, so I am left wondering. At any rate, the Moesman reprints are a fact, and if you are willing to spend between 30 and 35 guilders at an auction, you may acquire one. (Or have an extremely generous correspondent in the Netherlands, who gives one to you as a birthday present.)

Acknowledgments: Many thanks are due to Hans Caarls and Frans Warmenhoven for their article, which alerted me to the problems around the Moesman reprints and for their subsequent letters with extra information. Also thanks to Dr. Fred L. Reed who sent me photocopies of the two items which were discussed in *N.C.P.* and for his encouragements while the writing was going on. And of course, many thanks to our Vice-President, Larry Rehm, for transforming the materials for the figures into superb photographs. Finally, thanks go to our anonymous member, who supplied most of the figure material, for his generosity in lending it for a while.



Figure 10. The same pane as shown in Figure 9, except that the color is black. Note the center stamp.

NETHERLANDS PHILATELY

Cumulative Index by Subject Matter

Volumes 1 through 17

1975 - 1993

by Larry H. Rehm

In this index, an effort has been made to include all specific subjects published in the Journal. Not listed are items of a general or editorial nature, which are occasionally found throughout the Journal.

In order to facilitate grouping in this listing, it was necessary to alter the wording of some titles, to convey more accurately the subject covered. In addition, many smaller articles may have had no titles originally.

In the interest of brevity, the initials of frequent contributors, rather than their full names, are often used.

These are:

FHAR	—	Frans H.A. Rummens
FLR	—	Fred L. Reed
FWJ	—	Frank W. Julsen
LHR	—	Laurence H. Rehm
MH	—	MardJohan Hardjasudarma
PvR	—	Paul van Reyen
WvZ	—	Willem van Zandvoort

Two other important abbreviations are:

IFC	—	Inside Front cover
IRC	—	Inside Rear cover

Anniversary Issue, Congratulatory Letters

Ned. Postmuseum; Drs. Ronday	Vol. 10:26, Dec.'85
Ned. Maandblad; J.Ph. de Leeuw	Vol. 10:27, Dec.'85
Founding President R. Bennink	Vol. 10:28, Dec.'85
J.L. van Dielen	Vol. 10:28, Dec.'85
British Representative W.L. Morton	Vol. 10:28, Dec.'85
Gert Holstege	Vol. 10:65, Mar.'86
APRL, The American Philatelic Research Library; PvR	Vol. 1:16-17, Sep.'75
ASNP Governor Biographies; Benders, A.M., Julsen, Frank W., Matthews, E. and Reed, Dr. Fred. L.	Vol. 2:46-47, Mar.'77
ASNP Officer Biographies; Bennink, Richard J., Rehm, Laurence J. and van Reyen, Paul E.	Vol. 1:59-60, Jun.'76
Auction Trends, 1978; PvR	Vol. 3:64, (Jun)'78
Auction Results, 1981; PvR	Vol. 7:18-19, Sep.'81
Auction Results, 1982; PvR	Vol. 7:80-81, Jun.'82
Auction Results	Vol. 9:19, Sep.'84
Auction Results, Sept.'84 Ned. Postzegelveiling, FHAR and Slofstra, Cees	Vol. 9:58-59, Mar.'85
Beatrix, The Beginning; FHAR	Vol. 7:48-49, Mar.'81
Benders, Dr. Albertus Marinus, In Memoriam, FWJ	Vol. 8:85, Mar.'81
Booklet & Coil Contact Group, Tenth Anniversary; LHR	Vol. 8:77, Jan.'84
Booklet Stamps, How to Collect Used, Part I. WvZ	Vol. 14:35-38, Dec.'89

Booklet Stamps, How to Collect Used, Part II. WvZ	Vol. 14:47-49, Mar.'90
Books, Listing of Available Titles; Walton, Harry B. Jr.	Vol. 8:14-15, May'83

Book Reviews (all by Frans Rummens, except where noted otherwise)

Airmail Catalogue of Neth. & Overseas Areas; "The Flying Dutchman"	Vol. 8:81, Jan.'84
Anniversary Book, Tenth; NCP of Northern California	Vol. 5:48, Mar.'80
Anniversary of the Neth. Phil. of California, 22 1/2 Year	Vol. 16:28, Dec.'91
Atlas van Tropisch Nederland; Lands-meer, Reviewed by J.J.S. Gross	Vol. 16:28, Dec.'91
Automaatboekjes Catalogus 1976-77; de Rooy & Hali, LHR	Vol. 2:15-16, Sep.'76
Automaatboekjes Catalogus 1977-78; de Rooy & Hali, LHR	Vol. 3:16-17, Oct.'77
Automaatboekjes & Combinaties 1981-82; de Rooy & Hali, FWJ	Vol. 7:10, Sep.'81
Automaatboekjes & Combinaties 1982-83; de Rooy & Hali, FWJ	Vol. 8:6, May'83
Automaatboekjes Catalogus 1985; de Rooy & Hali,	Vol. 9:IRC, Mar.'85
Benelux Revenues; Barefoot, J., G. van den Berg	Vol. 14:39, Dec.'89
Cancels and Town Cards of Dutch Phil. Counters; Hermse, F.S.G.J.	Vol. 17:IRC, Mar.'93
Catalog of Benelux Countries, Minkus 1981-82; PvR	Vol. 7:39, Dec.'81
Catalogus, see also Katalogus	
Catalogus der Grootrond Stempels; H. Koopman, PvR	Vol. 5:2, IFC, Dec.'79
Catalogus Kinderbedankkaarten 1985-86	Vol. 9:84, Mar.'85
Catalogus der Kleinrond Stempels; H. Koopman, PvR	Vol. 5:2, IFC, Dec.'79
Catalogus Kleinrondstempels; Bijleveld, Han	Vol. 14:79, Mar.'90
Catalogus Postzegel- en Automaatboekjes Nederland; de Rooy & Hali (13th Ed.)	
Catalogus Postzegels op Brief 1852 - 1978; Buitenkamp & Müller	Vol. 6:56-57, Mar.'81
Catalogus Postzegels op Brief 1852 - 1984; Buitenkamp & Müller	Vol. 8:101, Apr.'84
Catalogus Postzegels op Brief 1985 - 1986; Buitenkamp & Müller	Vol. 10:68, Mar.'86
Catalogus Postzegels op Brief 1987 - 1988; Buitenkamp & Müller	Vol. 12:45-46, Dec.'87
Catalogus Postzegels op Brief 1990 - 1991; Buitenkamp & Müller	Vol. 15:83, Jun.'91
Catalogus Postzegels op Brief 1992-93; Buitenkamp, H & Müller, E.	Vol. 17:IRC, Mar.'93
Catalogus van de Republiek Indonesië 1945-49	
Dai Nippon	Vol. 10:71, Mar.'86
Check List of Postal Stickers; de Vries D.	Vol. 10:72, Mar.'86
Combinaties, 1981 Catalogus; Sauerbier Curaçao, A Postal History of; Julsen & Benders, PvR	Vol. 7:14, Sep.'81
Dat Kleine Beetje Extra; Boost, R.	Vol. 1:17, Sep.'75
Day of the Postage Stamp catalogue; van Putten	Vol. 11:93, Jun.'87
Drukwerkrolstempels van 1912, De; Bonefaas	Vol. 9:85, Jun.'85
Doorlopers Nederland, Speciaal Catalogus 1981; Sauerbier	Vol. 7:60, Mar.'82
Doorlopers en combinaties, Speciaal Catalogus 1983; Philanca	Vol. 7:14, Sep.'81
Dutch Blue Error, The; William G. Tapply	Vol. 8:71, Jan.'84
	Vol. 10:91, Jun.'86

- Dutch-English Glossary, Illustrated; Kremer, Hans Vol. 17:44, Mar.'92
- Etsnummers van Germaanse Series, Speciale Catalogus; van der Bijl, W. Vol. 12:66-67, Mar.'88
- Field Post Catalogus Vol. 10:24, Sep.'85
- Filatelie, Zuid-Boekproducties Vol. 10:IRC, Dec.'85
- Filatelie Informatief, 10th Installment Vol. 10:47, Dec.'85
- Filatelie Informatief, 11th Installment Vol. 10:69, Mar.'86
- Filatelie Informatief, Part 12 Vol. 11:46-47, Dec.'86
- Filatelie Informatief, Part 13 Vol. 11:47, Dec.'86
- Filatelie Informatief, Part 14 Vol. 11:47, Dec.'86
- Filatelie Informatief, Part 15 Vol. 11:94, Jun.'87
- Filatelie Informatief, Part 16 Vol. 12:47, Dec.'87
- Filatelie Informatief, Part 18 Vol. 12:83, Jun.'88
- Filatelistische Essays, 12; Rotterdam Philatelic Club Vol. 11:24, Sep.'86
- First Day Covers Catalogue 1985-86; Avezaat & Okker Vol. 9:60-61, Mar.'85
- First Day Covers Catalogue 1987-88; Avezaat & Okker Vol. 12:46-47, Dec.'87
- First Day Covers Catalogue 1991-92; Avezaat & Okker Vol. 15:84, Jun.'91
- FLORES (1942-46); Bessels Vol. 8:67, Jun.'84
- Forgeries of the Netherlands and her Ex-Colonies; van de Loo, P.F.A. (English version, PvR) Vol. 5:1, IFC, Sep.'79
- 2nd Supplement, 1981; van de Loo (Dutch version, PvR) Vol. 7:39, Dec.'81
- Frankkeerstempels Nederlandse Gemeenten, Deel 1; Veenstra Vol. 8:17, May'83
- Indies, 1870, 1883 and 1892 Issues; Sleenw, R.A., C. Slofstra Vol. 17:40, Mar.'92
- Inflation, How To Escape From; Airth & Hughes Vol. 6:17, Sep.'80
- Japanese Occupation Issues of the Dutch East Indies; Bleeker Vol. 7:81, Jun.'82
- Katalogus Postzegel en Automaatboekjes Ned.1991; de Rooy, W. Vol. 15:84, Jun.'91
- Kinderpostzegelacties vanaf 1924; Hylkema Vol. 8:68, Jan.'84
- KLM Air Service Holland-Indies; Verkuil, M., Reviewed by van Rysdam, John Vol. 17:60, Jun.'93
- KNSM, the Royal Netherlands Steamship Co.; Cockrill, Philip Vol. 7:39, Dec.'81
- Korte Kroniek van de Geposte Brief; ten Braake Vol. 1:32, Dec.'75
- KPM Schips from the Past, Old, I; Lindenboom, L. Vol. 13:26, Dec.'88
- KPM Ships from the Past, Old, II & III; Lindenboom, L. Vol. 15:3, IFC, Mar.'91
- Large Round Cancels, Guide to; Kuyt, B Vol. 17:20,24, Dec.'92
- Leidraad voor den Speciaalverzamelaar van Nederland., reprint of the 1922 edition Vol. 8:85, Apr.'84
- Luchtpostcatalogus van Ned. en O.R. 1991; De Vliegende Hollander Vol. 16:2, IRC, Dec.'91
- Luchtvaart en Luchtpost Encyclopedie Deel 1; TSchroots, J.L.C.H. & TSchroots-Boer, H.H.C. Reviewed by J.W. van Rysdam Vol. 5:15, Sep.'90
- Machinestempels, 6th Ed.; van der Wart, F.W. Vol. 16:3, IRC, Mar.'92
- Making of Stamps, The; Haan, H. Vol. 9:IRC, Mar.'85
- Maximum Kaarten, Speciale Catalogus; Dijk, O.L.J. van Vol. 8:43, Oct.'83
- Maximumkaarten, Ned & OG, Speciale Cat.; Dijk, O.L.J. van Vol. 16:3, IRC, Mar.'92
- Midden Sumatra, Postzegels van; Bruijnesteijn, W. Vol. 11:46, Dec.'86
- Nederlandse Koning- en Koninginnezegels; Hefting, Zeichnick, Benjamin Vol. 8:42-43, Aug.'83
- Nederlandse Loketstroken; Stroom & Matser Vol. 11:48, Dec.'86
- Nederlandse Postinrichtingen 1850-1906; Blom, F. Vol. 11:23, Sep.'86
- Nederlandse Postzegels 1981 PTT Vol. 10:70, Mar.'86
- Nederlandse Postzegels 1982 PTT Vol. 10:69, Mar.'86
- Nederlandse Postzegels van 1983, De; Hefting, Paul Vol. 11:93, Jun.'87
- Nederlandse Postzegels van 1984, De Vol. 11:94, Jun.'87
- Nederlandse Postzegels van 1985, De Vol. 12:66, Mar.'88
- Nederlandse Postzegels van 1986, De Vol. 13:13-14, Sep.'88
- Nederlandse Postzegels van 1987-88, De Vol. 13:68-69, Jun.'89
- Nederlandse Postzegels van 1989, De Vol. 15:14, Sep.'90
- Nederlandse Stadspostzegels; Horn, E.Jr. Vol. 12:67, Mar.'88
- Netherlands and Colonies Maritime Markings; Traanberg & Cockrill, PvR Vol. 6:57, Mar.'81
- Netherlands - the 1872 Issue; NCP of Northern California, PvR Vol. 1:33, Dec.'75
- Neth. Indies Issues under Jap. Occupation, Simplified Cat. of; Bruijnesteijn, Dr. W. Vol. 12:83, Jun.'88
- Netherlands War Mail of WWII Part 2. Interior Problems; van Doorn Vol. 8:8, May'83
- Ned. Indië: Japanse Bezetting. Postwaardestukken; Bulterman, P.R. Vol. 11:70-71, Mar.'87
- Netherlands Indies Issues under Japanese Occupation; Dai Nippon Society, PvR Vol. 1:33, Dec.'75
- Niederlandisch Neu-Guinea; Houwink, Roel H. Vol. 15:83, Mar.'91
- Perfins, List of Dutch; Enschede, E.J. Vol. 11:93, Jun.'87
- Plaatfouten 1980, Catalogus Ned.; Wilgenburg, J. van Vol. 6:2, IRC, Dec.'80
- Plaatfouten, Speciale Cat. 1988, Ned.; Wilgenburg, J. van Vol. 12:67, Mar.'88
- Plate Errors, 1993 Catalogue; Wilgenburg, J. van Vol. 17:IRC, Mar.'93
- POKO Issues of the Netherlands; Bauder (Revised Ed.), PvR Vol. 1:17, Sep.'76
- Postal Envelope, History of the Dutch; Sandberg, H.E.R. Vol. 16:48, Mar.'92
- Postal Problems in the Netherlands and the Netherlands Indies after the Liberation; van Doorn, W.J. Vol. 10:71, Mar.'86
- Postal Rates, Domestic and International; Da Costa, W.S. Vol. 15:14, Sep.'90
- Postal Stationery Catalogue 1984; Geuzendam Vol. 9:84, Jun.'85
- Postal Stationery, Private Printed; Geuzendam Vol. 8:8, May'83
- Postbladenkwesie, De; Stapel, C. Vol. 10:71, Mar.'86
- Postcode in Nederland; Stroom, Jos M.A.G. Vol. 14:54, Mar.'90
- Postkroniek van de Stad Rotterdam; Rodenburg, J.F. Vol. 14:79, Jun.'90
- Postmarks of the Netherlands Indies 1864-1950; Bulterman, P.R., PvR Vol. 7:40, Dec.'81
- Postmarks of the Netherlands Indies 1864-1950; Bulterman, P.R., PvR Vol. 7:60, Mar.'82
- Postmarks of the Netherlands Indies 1864-1950 (Supplement) Bulterman, P.R., Vol. 10:72, Mar.'86
- Postmerken Nederland, 300 Jaar, 1985 reprint; Korteweg, P.C. Vol. 10:46-47, Dec.'85
- Postmerken '86; PO & PO Vol. 10:48, Dec.'86
- Poststempels in Ned. Oost Indië; Wolff de Beer, W.S. Vol. 10:68, Mar.'86
- Poststempels, Nederland 1676-1915; Vellinga (Reprint) Vol. 7:40, Dec.'81
- Postvluchten Catalogus voor Nederland en Overzeese Rijkdelen; Boe Vol. 7:39, Dec.'81
- Postzegelboekjes, Handboek/Catalogus; Horn Vol. 6:57, Mar.'81
- Postzegelcatalogus 1981; Zonnebloem Vol. 7:20, Sep.'81
- Proeven Catalogus 1988; van Dieten, J.L. Vol. 13:23, Dec.'88
- Reviewed by Cees Slofstra
- PTT Philatelic Service, A Postal History; Kuypers, PvR Vol. 5:48, Mar.'80
- Reclamehandstempels en Gelegenheidstempels; v.d. Wart, F.W. Vol. 11:23, Sep.'86
- Registered Mail with Declared Value; da Costa, W.S. Vol. 10:94, Jun.'86
- Registration Labels of the Netherlands; German Study Group Vol. 6:17, Sep.'80
- R-stroken, Type Overzicht van de Ned.; Nieuwland, K.N. Vol. 16:2, IRC, Dec.'91
- Reply Coupons of the Netherlands and Overseas Areas; Koch & Wiggers de Vries Vol. 8:60, Oct.'83
- Roaming 'Round Holland; Erickson, PvR Vol. 4:36, Mar.'79
- Rolzegel Catalogus 1977-78; Portheine, Schlosser & Tielman, LHR Vol. 3:17, Oct.'77
- Rolzegel Catalogus 1982; Portheine, Schlosser & Tielman, LHR Vol. 7:54-55, Mar.'82
- Rolzegels Speciale Catalogus 1988-89; Hamminck and Portheine. Reviewed by Frans Rummens and Larry H. Rehm Vol. 13:31-32, Dec.'88
- Rolzegels, Ned. Speciale Catalogus 1991; Hamminck, Ir. R.J. & Portheine, P. Reviewed by LHR Vol. 15:16, Sep.'90

- Slogan Hand Cancels & Special Events Postmarks; v.d. Wart Vol. 8:22, Aug.'83
 Speciale Catalogus 1976; NVPH. PvR Vol. 1:28-29, Dec.'75
 Speciale Catalogus 1980; NVPH. PvR Vol. 5:21, Dec.'79
 Speciale Catalogus 1981; NVPH. PvR Vol. 6:1, IFC, Sep.'80
 Speciale Catalogus 1984; NVPH. PvR Vol. 8:69-71, Jan.'84
 Speciale Catalogus 1986; NVPH Vol. 10:48, Dec.'85
 Speciale NVPH Catalogus 1986, 'junior' edition Vol. 10:94, Jun.'86
 Speciale Catalogus 1987; NVPH Vol. 11:45, Dec.'86
 Speciale Catalogus 1991; NVPH Vol. 15:39, Dec.'91
 Speciale Catalogus Plaatfouten; van Wilgenburg, J. Vol. 14:54-55, Mar.'90
 Special Catalog of Maximum Cards (van Dijk, O.L.J.) Vol. 16:3, IRC, Mar.'92
 Speciale Verzamelgebieden Ned.; Zonnebloem Spoor en Post in Nederland; Dutch Railway Museum Vol. 15:83, Jun.'91
 Summer Stamps Catalogue; van Putten Vol. 11:23, Sep.'86
 Surinam Postal History; Riddell Vol. 10:37, Dec.'85
 Suriname, Encyclopedie van; Bruyning & Voorhoeve Vol. 7:40, Dec.'81
 Suriname Postzegelcatalogus 1983; Zonnebloem Vol. 8:85, Apr.'84
 TIMOR en SOEMBA; Bessels Vol. 8:101, Apr.'84
 Trompet Catalogus Vol. 8:71, Jan.'84
 Typering van de Ankeropdrukken van Hali, etc; Hausman, R Vol. 10:24, Sep.'85
 UN-Forces Military Mail; Emmenegger. PvR Vol. 11:46, Dec.'86
 UNTEA; Hofman, E.R Vol. 5:49, Mar.'80
 UPU on the Philatelic Scene, Effect of; Naayer, J.F. Vol. 11:23, Sep.'86
 Vierkantstempels van N.O.I., De; Geuzendam and Gross, J.J.S Vol. 10:95, Jun.'86
 Voor het Kind 1980; van Putten Vol. 2:64, Jun.'77
 Voor het Kind Catalogus 1984-85; van Putten Vol. 7:20, Sep.'81
 Zomerpostzegelwerk onder de Loep; Phillipa en Clarenburg Vol. 9:84, Jun.'85
 Zonnebloem 1986 Indonesië; Postzegelcatalogus Vol. 13:4, IRC, Jun.'89
 Zonnebloem 1986 Nederland; Postzegelcatalogus Vol. 10:95, Jun.'86
 Zonnebloem 1986 Nederland; Postzegelcatalogus Vol. 10:94, Jun.'86
- Bound Books vs. Loose-Leaf;**
 FHAR Vol. 8:120-121, Jun.'84
 Castles on Dutch Stamps; PvR Vol. 1:12-14, Sep.'75
- Catalogues**
 Old Catalogues - Scott 1894. PvR Vol. 15:74-75, Jun.'91
 Old Catalogue - Scott 1899. PvR Vol. 14:18-20, Sep.'89
 The 1990 NVPH and the Scott Vol. 14:39-40, Dec.'89
- Coil Corner (all written by L.H. Rehm)**
 Album Page Mounting Vol. 13:9-12, Sep.'88
 Budelrol Vol. 13:63-64, Jun.'89
 Catalogue of 5000-subject coils Vol. 12:65, Mar.'88
 Coils, Beatrix Vol. 8:7, May'83
 Coil Classification System Vol. 6:8, Sep.'80
 Coils, Current Status (1981) Vol. 7:33, Dec.'81
 Coils, History Vol. 7:8-10, Sep.'81
 Coil Issues Vol. 1:41-43, Mar.'76
 Coil Press Identification Vol. 6:65-66, Jun.'81
 Coil Print Direction Vol. 6:50-52, Mar.'81
 Coils, Removal of Used Vol. 8:120, Jun.'84
 Coils, Economic Justification
 Part I Vol. 7:74-75, Jun.'82
 Part II Vol. 8:7-8, May'83
 Part III Vol. 8:38, Aug.'83
 Control Numbered Coils Vol. 14:55, Mar.'90
 Control Number Types 4-7 Vol. 15:35-36, Dec.'90
 Horizontal Coil Numbering Vol. 13:30-31, Dec.'88
 Ink Jet Numbers; 1984 Europa Coils Vol. 14:13-14, Sep.'89
 Inverted Numbers; POKO "Black Tulip" Vol. 12:27, Sep.'87
 Mounting of 5-strips Vol. 17:14, Sep.'92
 Newly Released Coils Vol. 16:27-28, Dec.'91
 New Varieties of Control Numbers Vol. 17:31-33, Dec.'92
 Earliest POKOs Vol. 10:65, Mar.'86
 POKOs Vol. 10:21, Sep.'85
 Removal of Used Coils; 5000 Coils Vol. 9:85-86, Jun.'85
- 612Rb Varieties; Ink Je Control Numbers Vol. 11:59, Mar.'87
 1986 Coils; Use of 5000 Coils Vol. 10:90, Jun.'86
 5000-subject Coils Vol. 10:43, Dec.'85
 5000-subject Coils Vol. 11:18-20, Sep.'86
 5000-subject Coils Vol. 11:90-91, Jun.'87
 Unnumbered 5000-subject Coils Vol. 12:44-45, Dec.'87
 Combinations, How to Collect. FHAR Vol. 8:98-101, Apr.'84
- Curaçao**
 Additional/Corrections to "A Postal History of Curaçao"; Benders, Dr. A.M. Vol. 5:18:20, Dec.'79
 (Follow-up); Julsen & Benders Vol. 6:16:17, Sep.'80
 (Follow-up); Julsen & Benders Vol. 6:36, Dec.'80
 Handbook Fun; Geraci, Joseph Vol. 5:60-62, Jun.'80
 Handbook Update. vR Vol. 12:64, Mar.'88
 Airt #1-3. PvR Vol. 1:8-11, Sep.'75
 Censor Marking Discovery; Quist, Marinus Vol. 9:19, Sep.'84
 The Day the Post Office at St. Martin Opened; van der Sar, Dr. A. Vol. 11:36-38, Dec.'86
 Design of Wilhelmina Veil Issues. PvR Vol. 13:65-66, Jun.'89
 Dutch Airplanes: The Snipe; van Rijsdam, J.W. Vol. 13:21-23, Dec.'88
 Early Post Cards Proofs; van de Loo, P. Vol. 10:29-32, Dec.'85
 Perfins, Additional. FWJ Vol. 9:62, Sep.'84
 Postal History Auction I. PvR Vol. 4:38-45, Mar.'79
 Postal History Auction II. PvR Vol. 4:50-56, Jun.'79
 Prisoner of War Issue. PvR Vol. 3:56-57, (Jun)'78
 Registry Covers. FWJ Vol. 10:62-64, Mar.'86
 Slogan Cancellations. FWJ Vol. 8:87, Apr.'84
 SPECIMEN Post Card; Hugo, Vincent Vol. 9:86, Jun.'85
 SPECIMEN Post Card; PvR Vol. 14:26, Dec.'89
 Text of an 1803 Letter; Jackson, John. W Vol. 5:57-59, Jun.'80
 Varieties. FHAR Vol. 6:62-64, Jun.'81
 Waterlow & Sons Sketches. PvR Vol. 7:56-57, Mar.'81
 1803 Mail; Kieffer, L.E. Vol. 4:31-32, Dec.'78
 (Follow-up). WvZ Vol. 4:48, Mar.'79
 1918 Provisionals, Part I; Thissen, H.F.J. & PvR Vol. 2:6-10, Sep.'76
 1918 Provisionals, Part II; Thissen, H.F.J. & PvR Vol. 2:23-25, Dec.'76
 1931-32 Overprints. FHAR Vol. 15:4-7, Sep.'90
 5 ct Willem III Broken Plate Var.. FWJ Vol. 9:62, Mar.'85
 #142C, 144C First Days. FWJ Vol. 9:19, Sep.'84
- Current Market Trends** Vol. 7:80-81, Jun.'82
Current Philatelic Scene; van Eijck, Bert Vol. 2:27-29, Dec.'76
Current Philatelic Scene; van Eijck, Bert Vol. 2:48-49, Mar.'77
Current Philatelic Scene; van Eijck, Bert Vol. 2:64-65, Jun.'77
Current Philatelic Scene; Kuczun, Sam Vol. 4:13-14, Sep.'78
Current Stamp Market. PvR Vol. 6:14-15, Sep.'80
- Design**
 Beatrix Inauguration Issue Vol. 5:38-39, Mar.'80
 Beatrix Definitive Issue; Zeichick, Benjamin Vol. 8:42-43, Aug.'83
 Dreijer, Rein J.; Zeichick, Benjamin Vol. 7:34-36, Dec.'81
 Dutch Stamp; New, Anthony S.B. Vol. 4:34-36, Mar.'79
 Dutch Stamps; Zeichick, Benjamin Vol. 6:9, Sep.'80
 Dutch Tulip Issue; Zeichick, Benjamin Vol. 7:73, Jun.'82
 Great Men on Dutch Stamps Issues. PvR Vol. 6:10-13, Sep.'80
 Korfbal Issue; Dooijes, Dick & Verbeij, Th. Vol. 4:16, Dec.'78
 M.C. Escher as Stamp Designer; Zwart, Martin Vol. 6:48-50, Mar.'81
 Netherlands #700-701; Zeichick, Benjamin Vol. 6:28, Sep.'80
 Netherlands antilles #352; Zeichick, Benjamin Vol. 6:69-71, Jun.'80
 PTT Poll of Design Acceptance Vol. 6:68, Jun.'81
 Results of Poll Members; Zeichick, Benjamin Vol. 7:11, Sep.'81
 1959 Summer Set; Zeichick, Benjamin Vol. 7:11, Sep.'81
- Editorial Comment**
 Oratio pro domo. PvR Vol. 13:25-26, Dec.'88

Fakes and Forgeries (all by Paul van Reyen, unless indicated)

- Court of Justice Overprints Vol. 9:62, Mar.'85
 Curaçao, 1873 and 1895 Issues Vol. 5:63, Jun.'80
 Curaçao, #3, #11 Vol. 6:76-77, Jun.'81
 Curaçao, #10 Forgery Vol. 2:15, Sep.'76
 Curaçao, Air #82-88 Vol. 4:28, Dec.'78
 Curaçao, Dues #1-10, 13, 19 Vol. 5:14, Sep.'79
 Curaçao Dues #21-30 Vol. 8:10, May'83
 Fur Collar, Wide Lines, 10 ct; Holstege, Gert Vol. 10:21, Sep.'85
 Internment Stamps Vol. 14:15, Sep.'89
 Netherlands #14, 16, 17, 47, 64, 66, 73, 75, 98 Vol. 8:9-10, May'83
 Netherlands #114 Vol. 7:38, Dec.'81
 Netherlands #117 Vol. 3:63, (Jun)'78
 Netherlands #117 Vol. 4:28, Dec.'78
 Netherlands #118 Vol. 5:47, Mar.'80
 Netherlands #134-135 Vol. 4:61, Jun.'79
 Netherlands World Court #9 Vol. 7:38, Dec.'81
 Netherlands World Court #16-19 Vol. 4:61, Jun.'79
 Netherlands Dues #68 Vol. 6:16, Sep.'80
 Netherlands Indies #1 Vol. 4:28, Dec.'78
 Netherlands Indies #1 Vol. 4:62, Jun.'79
 Netherlands Indies #1 Vol. 5:14, Sep.'79
 Netherlands Indies #10 Vol. 4:8-9, Sep.'78
 Netherlands Indies #13, 16 Vol. 6:76, Jun.'81
 Netherlands Indies #146, 148 Vol. 6:54, Mar.'81
 Netherlands Indies #246-265 Watermarks Vol. 7:13, Sep.'81
 Netherlands Indies Air #1-5 Vol. 5:45-47, Sep.'78
 Netherlands Indies Air #14-16 Vol. 5:45-47, Mar.'80
 Netherlands Indies Officials #8-27 Vol. 5:45-47, Mar.'80
 Netherlands Indies Officials Vol. 6:55, Mar.'81
 Netherlands Indies Dues #2-13 Vol. 4:47, Mar.'79
 Overprint of 1923, 10 ct; de Boer, Henk Vol. 10:45, Dec.'85
 Photocopy Machine Cancels; Fake Coils Vol. 15:81, Jun.'91
 Special Flight airmail issues Vol. 15:38-39, Dec.'90
 Stramproy Cancellation Vol. 15:81, Jun.'91
 Surinam 1873-88 and 1900 Issues Vol. 5:64, Jun.'80
 Surinam #9, 11, 12, 23, 38, 37 Vol. 3:63, (Jun)'78
 Surinam #59, 205d Vol. 4:62, Jun.'79
 Surinam Dues #6 Vol. 4:28, Dec.'78
- Filacento, Views on; Gregoire-Voskamp, P Vol. 10:46, Sep.'85
 First Day Sheets (and other junk). FHAR Vol. 7:59, Mar.'81
 Five "Royal" buildings. PvR Vol. 7:51-53, Mar.'81
 Floating Safes, Company for the Promotion of, (Marine Insurance Issues). Anon. Vol. 8:125-128, Jun.'84
 Fournier the Forger. PvR Vol. 7:76-79, Jun.'82
 Gerrish, W.E., In Memoriam Vol. 4:3-4, Sep.'78
 Glory and Tragedy; the Uiver Flights; Teekens, Michael Vol. 13:46-51, Jun.'89
 Glossary of Dutch Philatelic Terms. PvR Vol. 1:556a-d, Jun.'76
- ### Great Men on Dutch Stamps (written by Payl van Reyen)
- Berlage, H.P. Vol. 11:89-90, Jun.'87
 Boerhaave, Herman Vol. 6:73, Jun.'81
 Boesboom, Johannes Vol. 6:34, Dec.'80
 Boë Sylvius, Franciscus de la Vol. 6:72, Jun.'81
 Camper, Petrus Vol. 6:74, Jun.'81
 Deventer, Hendrik van Vol. 6:73, Jun.'81
 Donders, Franciscus Cornelis Vol. 6:74, Jun.'81
 Erasmus Vol. 6:11-12, Sep.'80
 Gogh, Vincent van Vol. 6:33, Dec.'80
 Great? Man: Meester J.F. van Royen, Part I Vol. 13:66-68, Jun.'89
 Great? Man; Meester J.F. van Royen, Part II Vol. 14:10-13, Sep.'89
 Groot (Grotius), Hugo de Vol. 6:13, Sep.'80
 Guyot, Rev. Henri Daniel Vol. 6:75, Jun.'81
 Maris, Jacob Vol. 6:34, Dec.'80
 Maris, Matthijs Vol. 6:35, Dec.'80

- Mathijsen, Anthonius Vol. 6:74, Jun.'81
 Mauve, Anton Vol. 6:34, Dec.'80
 Rembrandt Vol. 6:33, Dec.'80
 Steen, Jan Vol. 6:33, Dec.'80
 Sweelink; Diepenbrock; Pijper Vol. 12:58-60, Mar.'88
 Swieten, Gerard van Vol. 6:74, Jun.'81
 Vermeer Vol. 6:33, Dec.'80
 Versalis, Andreas Vol. 6:72, Jun.'81

Great Men on Dutch Stamps (written by Julius Mansbach)

- Robert Badel-Powell Vol. 8:76, Jan.'84
 Steen, Jan Vol. 8:75, Jan.'84
 Willem Usselinx Vol. 8:75, Jan.'84

Hartz, Sem, and his Stamp Engravings; Slofstra, Cees Vol. 17:26-28, Dec.'92

Heroes of the Sea (all written by Frans H.A. Rummens, except where noted)

- Evertsen, Cornelis, the Elder Vol. 10:46, Dec.'85
 Evertsen, Cornelis, the Younger Vol. 8:81, Jan.'84
 (Follow up) Vol. 8:121, Jun.'84
 Evertsen, Jan Vol. 8:9, Apr.'84
 Gent, Willem Joseph van Vol. 9:18, Sep.'84
 Hein, Piet Pietersz Vol. 8:94, Apr.'84
 Heroes of the Sea, Introduction Vol. 8:29-32, Aug.'83
 Ruyter, Michiel Adriaenzoon de Vol. 8:118, Jun.'84
 ditto, written by Julius Mansbach Vol. 8:76, Jan.'84
 Tromp, Cornelis Vol. 10:17-18, Sep.'85
 Tromp, Maerten Harpertszoon Vol. 10:17, Sep.'85
 Vries, Tjerck Hiddes de Vol. 9:82-83, Jun.'85
 Witt, Witte Cornelisz de Vol. 8:95, Apr.'84

- Impressions (in the Dutch Stamp Market); Kuczun, Sam Vol. 13:24, Dec.'88
 Index, Netherlands Philately Vols 1-4 in chronological order. PvR Vol. 5:9-13, Sep.'79
 Index, Netherlands Philately Vols 5-6 Vol. 7:15-??, Sep.'81
 Index, Cummulative, Volumes 1-8. LHR Vol. 9:39, IRC, Dec.'84
 Index, Cummulative, Volumes, A & C Vol. 10:66, Mar.'86
 Index, Cummulative, Volumes 9-10 Vol. 11:12-15, Sep.'86
 Index, Cummulative, Volumes 11-12 Vol. 13:14-16, Sep.'88
 Index, Cummulative, Volumes 13-14 Vol. 15:8-9, Sep.'90
 Index, Cummulative, volumes 15-16, (incomplete) Vol. 17:15-16, Sep.'92
 In Memoriam, Jan Dekker F.R.S.L., PvR Vol. 13:64, Jun.'89
 Interview with Phil. Zwart; FHAR Vol. 11:43-44, Dec.'86
 Juliana, A Retrospective; FHAR Vol. 7:42-48, Mar.'81
 Letters Vol. 14:46-47, Mar.'90
 Library Listing; Fernand Mollenkramer Vol. 2:60-63, Jun.'77
 Library Listing; Fernand Mollenkramer Vol. 6:29-32, Dec.'80
 Library Listing; Fernand Mollenkramer Vol. 9:20-25, Sep.'84
 Library Listing; Fernand Mollenkramer Vol. 8:37-38, Dec.'84
 Library Listing, Recent Additions; Fernand Mollenkramer Vol. 8:18, May'83

Library Listing, Recent Additions; Fernand Mollenkramer	Vol. 8:119-120, Jun.'84	Numeral Cancels; Haak, E	Vol. 2:44-45, Mar.'77
Magnifier, Micronta; anon.	Vol. 9:38, Jun.'85	New Issues; FHAR	Vol. 9:35-37, Dec.'84
Manual, Fifty Years of the; PvR	Vol. 14:58-66, Jun.'90	New Issues; FHAR	Vol. 9:52-53, Mar.'85
Maximum Cards; FHAR	Vol. 7:37, Dec.'81	Overland Mail; Dekker, Jan	Vol. 3:2-8, Oct.'77
Netherlands		Overland Mail (Follow up); Geraci, Joseph	Vol. 3:48, (Jun)'78
Airmail Flights; Sittig, Capt. R.M.	Vol. 14:75-80, Jun.'90	Overland Mail (Follow up); Dekker, Jan	Vol. 4:16, Sep.'78
Airmail Labels; de Vries & van Rijsdam	Vol. 14:2-9, Sep.'89	Parcel Post Due Issue; Dekker, Jan	Vol. 1;25-26, Dec.'75
Allied Food Bombardments (Postal Recognition); van Rijsdam, J.W.	Vol. 15:33-35, Dec.'90	Paper, Gum and Printing Varieties of the Post-war Issues; Bakhuizen van den Brink, R.C.	Vol. 2:11-13, Sep.'76
Armenwet Series, Part I; Vellekoop, Jan	Vol. 6:42-45, Mar.'81	Perfin PZV/50; LHR	Vol. 10:23, Sep.'85
Armenwet Series, Part II; Vellekoop, Jan	Vol. 6:58-61, Jun.'81	POKO Issues; Heimans, John	Vol. 17:56-60, Jun.'93
Beatrix Issues, Cylinder Numbers; PvR	Vol. 16:2-4, Sep/Dec.'91	Postage Due Overprints of 1906, 1909; Slofstra, Cees	Vol. 16:66, IRC, Jun.'92
The Blue Band Cancellations of 1924; Holstege, Gert	Vol. 9:72-76, Jun.'85	Postage Dues, Series of 1912-1946; WvZ	Vol. 12:60-63, Mar.'88
The Blue Band Cancellations of 1924; Holstege, Gert	Vol. 10:4-8, Sep.'85	Postage Due, 1912 Issue in Comb Perf 12 1/2, Part I; van Leeuwen, P. Storm	Vol. 5:15-17, Sep.'79
The Blue Band Cancellations of 1924; Holstege, Gert	Vol. 10:38-43, Dec.'85	Postage Due, 1912 Issue in Comb Perf 12 1/2, Part II; van Leeuwen, P. Storm	Vol. 5:31-32, Dec.'79
The Blue Band Cancellations of 1924; Holstege, Gert	Vol. 11:41-42, Dec.'86	Postage Due Issue of 1947-58; Dekker, Jan & Goldhorn, L.	Vol. 1:34-38, Mar.'76
Booklet Classifications; de Rooy, Walter, & Hali, J.C.A.	Vol. 8:32-34, Aug.'83	Postbewijzen (Money Order Stamps); WvZ	Vol. 4:24-25, Dec.'78
Booklet Collecting and #39; Horn, E.Jr	Vol. 1;38-40, Mar.'76	Posthorn Design; PvR	Vol. 14:69, Jun.'90
Booklet Paper and Gum Varieties (from Handboek Automaatboekjes); de Rooy & Hali	Vol. 6:25-27, Aug.'80	Prince William van Orange; PvR	Vol. 4:26-27, Dec.'78
Booklet Paper and Gum Varieties (from Handboek Automaatboekjes); de Rooy & Hali	Vol. 17:45-48, Mar.'93	Queen Beatrix Definitives; PvR	Vol. 7:58, Mar.'81
Coils Issued Since 1936; van Eijck, Bert	Vol. 2:29-31, Dec.'76	Queen Beatrix Definitives; PvR	Vol. 10:2-3, Sep.'85
Coil Stamps for Large Volume Users; Druif, N.C.	Vol. 11:59-61, Mar.'87	Queen Beatrix Inaugural Issue; FHAR	Vol. 13:34-41, Mar.'89
Crow Airmail of 1944 Variety; JM	Vol. 9:IRC, Jun.'85	Railroad and Press Letters; Benders, Dr. A.M.	Vol. 5:2-6, Sep.'79
Deutsche Dienstpost Nederlands; de Boer, Gerard	Vol. 10:50-57, Mar.'86	Reverse Listing of Small Round Cancels, Part I; Enthoven, J	Vol. 8:91-93, Apr.'84
Deutsche Dienstpost Nederlands; de Boer, Gerard	Vol. 10:81-88, Jun.'86	Reverse Listing of Small Round Cancels, Part II; Enthoven, J	Vol. 8:112-115, Jun.'84
Deutsche Dienstpost Nederlands; de Boer, Gerard	Vol. 11:4-11, Sep.'86	Rotogravure Varieties of the Dove Numerals; LHR	Vol. 1:50-51, Jun.'76
Double-ring Town Vancel; FWJ	Vol. 9:IRC, Jun.'85	Straight-line Cancels; Kok Rzn, J.	Vol. 3:11-16, Oct.'77
Dutch Red Cross Ship; Wedd, Monty	Vol. 10:19, Sep.'85	Two Printings of 1929 Welfare Set; PvR	Vol. 15:75, Jun.'91
False Perfs on booklet combinations; PvR	Vol. 5:3 IFC, Mar.'80	Van Konijnenburg Imperfs on Cover; Matthews E.	Vol. 5:3 IRC, Mar.'80
FDC first Post Card; Smith, Edward C.	Vol. 1:45-46, Mar.'76	Van Konijnenburg Imperfs on Cover (Follow up); van Dieten, J.E.	Vol. 8:66, Jan.'84
Frying Pan Revenue Issue; MacDonald, Harold F.	Vol. 7:79-80, Jun.'82	Veth Era; WvZ	Vol. 3:50-53, (Jun)'78
Groesbeek 18x44 Cancellation; Bestebreurtje, Dr. A.D.	Vol. 5:34-37, Mar.'80	Veth Era (Follow up); Dekker, Jan	Vol. 4:17, Sep.'78
Hanging Hair Issue, Part I; PvR et al	Vol. 2:18-20, Dec.'76	Vürtheim Designers, The Two J. ; FHAR	Vol. 15:23, Dec.'90
Hanging Hair Issue, Part II; PvR et al	Vol. 2:34-37, Mar.'77	Windmill Perfin; LHR	Vol. 10:16, Sep.'85
Hanging Hair Issue, (follow up)	Vol. 2:55-60, Jun.'77	World Court FDC; PvR	Vol. 5:33, Dec.'79
Hanging Hair Issue, (follow up); Dekker, Jan	Vol. 4:16, Sep.'78	World Court FDC (Follow up); PvR	Vol. 5:49, Mar.'80
Hindenburg Crash Dutch covers; Ganz, Cheryl	Vol. 10:77-80, Jun.'86	World Court, 1934-1940; Slofstra, C	Vol. 12:30-33, Dec.'87
Identification System for the N.B./V. Perfin, An; Mistretta, Paul A.	Vol. 11:62-67, Mar.'86	Wrong Name on "Coronation Guilder"; PvR	Vol. 15:79-80, Jun.'91
Internment Stamps; Konig, K.E.	Vol. 11:33-35, Dec.'86	1852 Issue Plating; FLR	Vol. 6:18-20, Sep.'80
Internment Stamps; Konig, K.E.	Vol. 11:53-58, Mar.'87	1852 Issue Watermarks; FLR	Vol. 1:18-23, Dec.'75
Internment Stamps; Konig, K.E.	Vol. 11:79-84, Jun.'87	1852 Issue Watermarks (Follow up); FLR	Vol. 1:46-47, Mar.'76
Jubilee 35 ct Perf. 11; Holstege, Gert	Vol. 1:30-31, Dec.'75	1852 Issue Watermarks; FLR & PvR	Vol. 7:62-64, Jun.'82
Jubilee Issue 35 ct 11x11; Holstege, Gert	Vol. 9:57, Mar.'85	1852 Issue Watermarks (Follow up); van de Loo, Pieter	Vol. 8:115-117, Jun.'84
Juliana "En Profiler" Issues; FHAR	Vol. 15:2-4, Sep.'90	1852 Issue Watermarks (letter); FLR	Vol. 10:59, Mar.'86
Kinderbedankaarten; FHAR	Vol. 6:56 #2, Jun.'81	1852 Issue Watermarks; PvR	Vol. 17:41-44, Mar.'93
Laren Provisional Post Card; Landua, L.	Vol. 2:26-27, Dec.'76	1852 Issue, Commentary on 1979 Speciale Catalogus Listing; LHR	Vol. 4:25, Dec.'78
Laren Provisional Post Card; (Follow up), PvR	Vol. 4:63, Jun.'79	1852 Issue, Commentary on 1979 Speciale Catalogus Listing; (Follow up); LHR	Vol. 5:20-21, Dec.'79
Lebeau Dove Types; PvR	Vol. 10:33, Sep.'85	1852 Issue, Plate 1A of, Reconstruction; FLR	Vol. 17:34-40, Mar.'93
Liberation Set, Part I; Holleman, A.F.	Vol. 8:36-38, Aug.'7	1852 Issue, Plate 1A of, Reconstr., Further Comments; FLR	Vol. 17:54-55, Jun.'93
Liberation Set, Part II; Holleman, A.F.	Vol. 8:57-60, Oct.'83	1852 15 ct Partial Sheet; van Dieten, J.L.	Vol. 4:32-33, Dec.'78
Melbourne Olympics 7 ct of 1956; PvR	Vol. 16:14, Dec.'91	1867 Issue (see NVPH Expertizing Committee)	
Netherlands-U.S. Historical Relationship, Part I; Bennink, Richard	Vol. 1:44-45, Mar.'76	1872 Issue; Matthews, E.	Vol. 2:2-6, Sep.'76
Netherlands-U.S. Historical Relationship, Part II; Bennink, Richard	Vol. 1:60-61, Jun.'76	1872 15 ct.; Matthews, E.	Vol. 4:18-23, Dec.'78
Netherlands-U.S. Historical Relationship, Part III; Bennink, Richard	Vol. 2:13-14, Sep.'76	1872 20 ct; Matthews, E.	Vol. 6:3-7, Sep.'80
Netherlands-U.S. Historical Relationship, Part IV; Bennink, Richard	Vol. 2:25-26, Dec.'76	1872 25 ct; Matthews, E.	Vol. 2:50-55, Jun.'77
		1872 50 ct; Matthews, E.	Vol. 7:2-6, Sep.'81
		1872 to 1890 Perforations, Part I; Gerrish, W.E.	Vol. 8:2-6, May'83
		1872 to 1890 Perforations, Part II; Gerrish, W.E.	Vol. 8:24-27, Aug.'83
		1872 to 1890 Perforations, Part III; Gerrish, W.E.	Vol. 8:54-56, Oct.'83
		1876 Issue on Laid Paper; Geraci, Joseph	Vol. 3:58, (Jun)'78
		1892-99 Issue, Queen with Long Hair; PvR	Vol. 9:48-52, Mar.'85
		1899-1921 Fur Collar Issue, Paper Varieties; WvZ	Vol. 1764, IRC, Jun.'93

- 1923 Child Welfare Issue; FHAR Vol. 17:55, Jun.'93
1930 Kind Issue; FHAR Vol. 8:72, Jan.'84
1943-44 Germanic Symbols and Heroes of the Sea; FHAR Vol. 8:29-32, Aug.'83
1944 Perforated Cross; LHR Vol. 3:21-22, (Dec)'77
1944 Perforated Cross; MacDonald, H. F. & Rehm, L.H. Vol. 8:16-17, May'83
1950 Overprint 6 on 7 1/2 ct; Janssen, Cees Vol. 17:18-20, Dec.'92
1954 Fiscal Issue; Mollenkramer, Fernand Vol. 8:39-41, Aug.'83
#35f, The 5 ct Orange Hanging Hair Error, Introduction; FWJ & LHR Vol. 8:65-66, Jan.'84
#35f, Original Article, Part I; Holstege, Gert Vol. 8:107-111, Jun.'84
#35f, The Hanging Hair Error (Conclusion); Holstege, Gert Vol. 9:11-16, Sep.'84
(same) Follow up correspondence; Holstege, Gert and Boekema, R. Vol. 9:16-17, Sep.'84
#106 (under Noteworthy Notes); PvR Vol. 3:32, (Dec)'77
#113 Plate Fault; PvR Vol. 5:13, Sep.'79
#274 Proof; PvR Vol. 7:36, Dec.'81
The 22 1/2 ct Issues; van Rijsdam, J. Vol. 17:50-53, Jun.'93
- Netherlands Antilles**
Aerogrammes; PvR Vol. 5:6, Sep.'79
Aruba's Independence Causes Confusion; Es-rati, Stephen Vol. 11:69-70, Mar.'87
Disberg Set, Part I; PvR Vol. 5:22-25, Dec.'79
Disberg Set, Part II Vol. 5:40-44, Mar.'80
Disberg Set, (Follow up); FHAR Vol. 6:39-41, Mar.'81
Mounting by Topic; FHAR Vol. 6:21-25, Jun.'81
New Issues; FHAR Vol. 11:40; Dec.'86
Plate Fault, #256; PvR Vol. 11:40, Dec.'86
Postage Dues P44, 46; FHAR Vol. 14:80, Jun.'90
Recent Issues, To Collect or Not to Collect; FHAR Vol. 15:24-33, Dec.'90
Varieties; FHAR Vol. 6:62-64, Jun.'81
- Netherlands Indies (and later names)**
Airmail Stamps, A Postal History; MH Vol. 11:85-88, Jun.'81
Airs, 12 Varieties; PvR Vol. 1:24, Dec.'75
BERLIN (Code word); MH Vol. 14:27-31, Dec.'89
Circles of Ink; Spheres of Influence; MH Vol. 14:42-46, Mar.'90
Covers, Two Interesting; PvR Vol. 8:73-74, Jun.'84
Dai-Nippon Post Card, The; MH Vol. 12:70-79, Jun.'88
Dues, One-colour; Reus, Ir. H.J.W. Vol. 7:25-30, Dec.'81
Essays & Proofs of the Topographic Service 1918-1940; Bakhuizen van den Brink, R.C. Vol. 17:2-15, Sep.'92
(Comments on same); LHR Vol. 17:25, Dec.'92
Franking, In Quest of Correct; MH Vol. 16:5-11, Sep/Dec.'91
Issue of 1902-09 and Overprints; Moorlag, Kees Vol. 9:64-72, Jun.'85
Java-Buiten Bezit-Dienst; WvZ Vol. 3:27-30, (Dec)'77
Java-Buiten Bezit-Dienst; Vol. 8:66, Jun.'84
Large Round Cancels, Study of; PvR Vol. 1:23-24, Dec.'75
Makassar Dues; PvR Vol. 5:64, Jun.'80
Missing "I", Case of the; Verschuur, J.H. Vol. 16:50-59, Jun.'92
Merauke; PvR & van Buskirk, John W. Vol. 1:52-58, Jun.'76
Numeral Cancels, Maps for; de Mots, Garrett Vol. 5:50-56, Jun.'80
Numeral Cancels, Maps for (Follow up); de Mots, Garrett Vol. 6:20, Sep.'80
Numeral Cancels, Maps for (Extended follow up); de Mots, Garrett & PvR Vol. 6:46-47, Mar.'80
Numeral Cancels, Maps for (Follow up); Vol. 6:75, Jun.'81
Postal Activities, Resumption of, from 1944; Geerts, G.A. Vol. 9:77-78, Jun.'85
Postal Activities, Resumption of, from 1944; Geerts, G.A. Vol. 10:10-16, Sep.'85
Post Roads of Daendels, The Great; Bakker A. Vol. 15:42-45, Mar.'91
POW Mail in the Occupied Indies; MH Vol. 15:52, IFC, Mar.'91
Registry Label, Green; PvR Vol. 5:33, Dec.'79
Registry Label, Green, (Follow up); Esbensen, Victor Vol. 5:3, IRC, Mar.'80
Revenue Stamps and other Securities; Bakhuizen van de Brink Vol. 17:21-24, Dec.'92
Revenue Stamps of NEI; Wheatley, R. Vol. 17:61, Jun.'93
Rising Sun over Insulinde, The; MH Vol. 16:30-37, Mar.'92
Stamp Production 1940-41, Neth. Indies; WvZ Vol. 15:46-51, Mar.'91
- Stamps Printed in Melbourne, Indies; PvR Vol. 15:50, Mar.'91
Straight-line Cancels; Bulterman, P.R. Vol. 12:33-40, Dec.'87
UNTEA Money Orders; MH Vol. 13:52-56, Jun.'89
War-time Mails (letter); Roebroek, Jan Vol. 10:90-91, Jun.'86
WWII Dutch Mail to Neth. Indies; Blackburn, J.Lewis Vol. 10:60-61, Mar.'86
Ditto Vol. 17:62-63, Jun.'93
1930 Jeugdorgzorg Issue; PvR Vol. 5:26, Dec.'79
Aftermath of Jeugdorgzorg Set; PvR Vol. 15:75, Jun.'91
1945 American Banknote Issue; WvZ Vol. 4:59-60, Jun.'79
#35 (under Noteworthy Notes); PvR Vol. 3:32, (Dec)'77
#286, Plate Fault; Esbensen, Victor Vol. 5:3, IRC, Mar.'80
- Netherlands New Guinea**
Philatelic Aspect, Part I; Bunge, J.W.F. Vol. 3:32-49, Mar.'78
Philatelic Aspect, Part II; Bunge, J.W.F. Vol. 3:54-56, (Jun)'78
Philatelic Aspect, (Follow up); Esbensen, Victor Vol. 4:29-30, Dec.'78
Post Offices and Cancels. 1950-62; Stadtherr, Leon G. Vol. 12:13-26, Sep.'87
Postal Services, Some Aspects of; Ponitz, G.C.F.W. Vol. 12:2-13, Sep.'87
Three Wet Letters (to NNG); MH Vol. 16:24-26, Dec.'91
- NVPH Speciale Catalogus, On the Validity of; Slofstra, Cees Vol. 10:74-76, Jun.'86
NVPH Speciale Catalogus, Some Personal Opinions; PR Vol. 9:79-82, Jun.'85
NVPH Expertizing Committee; the Issue of 1867; van Dieten, J.L. Vol. 9:27-34, Mar.'85
Page Set-up (How to); WvZ Vol. 2:41-43, Mar.'77
- Paper**
On Stamps and Paper Acidity; FHAR Vol. 15:37-38, Dec.'90
Paper Luminescence in Booklets; FWJ Vol. 16:64, IRC, Jun.'92
Thick or Thin Paper; PvR Vol. 15:18-23, Dec.'90
3 ct Dove on Extra Thick Paper; PvR Vol. 15:23, Dec.'90
- Paper Varieties; Belinfante, F.J. Vol. 1:27-28, Dec.'75
Perforation, 12 1/2 : 12 Comb.; WvZ Vol. 5:7-8, Sep.'79
- Philatelic Calendar (all by Julius Mansbach)**
Beets, Nicolaas; Vol. 8:75-76, Jan.'84
Boë Sylvius, Franciscus de la Vol. 11:20, Sep.'86
Delta Works Vol. 11:84, Jun.'87
Donders, Frans Cornelisz Vol. 11:24, Sep.'86
Frederik Hendrik, Prince of Oranje Nassau Vol. 11:72, Mar.'87
Irausquin, Juan Enrique Vol. 10:67, Mar.'86
Jewish Cemetary in Curaçao Vol. 11:24, Sep.'86
Marken/IJssel Lake Vol. 11:88, Jun.'86
Netherlands Bible Society Founding Vol. 10:88, Jun.'86
Vol. 10:67, Mar.'86
- Post Code Vol. 12:26, Sep.'87
Queen Juliana Bridge Vol. 11:95, Jun.'86
Scott, Lionel Bernard Vol. 10:67, Mar.'86
Tulip Export Industry Vol. 10:80, Jun.'86
U.P.U. Founding Vol. 10:67, Mar.'86
U.P.U. (Surinam) Vol. 11:95, Jun.'87
Watersnood Vol. 111:72, Mar.'87
- Philatelic Curiosa (all by Frans Rummens)**
Andrew's Cross Franking Vol. 10:91, Jun.'86
Cobra Tab; Date Cancel Vol. 13:29-30, Dec.'88
Last Day of Validity, van Krimpen Vol. 10:92, Jun.'86
Liberation Overprint Vol. 15:11, Sep.'90
Mixed Franking Vol. 10:64, Mar.'86
Pallas Athene Seals Vol. 14:17, Sep.'89
Parcel Post Address Card Vol. 10:93, Jun.'86
Pre-First Day Cancel Vol. 11:15, Sep.'86
Smallest Stamp Vol. 10:44, Dec.'85

Stadspost	Vol. 10:32, Dec.'85
Surinam redfern Cachet	Vol. 15:11, Sep.'90
Talking Letter	Vol. 10:45, Dec.'85
Triangular Letter Seals; Neth. Antilles Souvenir Cachets; Saba Find; 1945 Special Cancels	Vol. 12:80-82, Jun.'88
Triangular Patterns	Vol. 15:12, Sep.'90
Van Konijnenburg Cover	Vol. 13:12-13, Sep.'88
1893 Van Dieten Card	Vol. 15:13, Sep.'90
1986 Use of 1885 N.O.I. Post Card	Vol. 10:92, Jun.'86

Philatelic Market in the Netherlands;

PvR	Vol. 11:16-18, Sep.'86
Philatelic Research; Pla, Steven A.	Vol. 11:21-22, Sep.'86
Philatelic Smiles; Adema, Kees	Vol. 11:74-76, Jun.'87
Phosphorescence, Types;	
Belinfante, F.J.	Vol. 1;14-15, Sep.'75
Phosphorescence, Types (Follow up);	
LHR	Vol. 1:26-27, Dec.'75
Photogravure Printing, 30 Years of	
Web, 1936-1966; Dekker, Jan	Vol. 7:64-70,75, Jun.'82
Pictorial Postal Cards, The; LHR	Vol. 15:66-73, Jun.'91
Plate Faults, Minor; Winsser, John	Vol. 2:65, Jun.'77
Plate Faults, Minor; Winsser, John	Vol. 3:8, Oct.'77
Politics, Bankers & Merchants, a Treaty of Amity & Commerce; Bennink, Richard J.	Vol. 7:50-51, Mar.'81
Postage Due on Cover; Sacconaghi, Charles	Vol. 8:122-124, Jun.'84
More Postage Due on Cover; Sacconaghi, Charles	Vol. 13:56-62, Jun.'89
Appendix to the above	Vol. 14:52-53, Mar.'90

Postal Booklet Notes (all by Frank Julsen)

Booklets, Introduction	Vol. 6:66-68, Jun.'81
Booklets, Current and Anticipated, 1981	Vol. 7:32-33, Dec.'81
Booklets PB9, 13, 14	Vol. 8:61-62, Oct.'83
Booklets PB27A and 28A	Vol. 7:71-72, Jun.'82
Booklet, Red Cross	Vol. 8:62-63, Oct.'83
Booklet, 1984 Summer	Vol. 8:119, Jun.'84
Combination Cataloguing. PB27B, PB31 "Kombinaties"	Vol. 10:22-23, Sep.'85
PB31 Variety	Vol. 16:59-IRC, Jun.'92
PB32	Vol. 16:4,IRC, Jun.'92
PB32, PB33, PB34 ??	Vol. 10:89, Jun.'86
PB Advertising Campaign	Vol. 11:39-40, Dec.'86
PB45, Floriade '92	Vol. 10:91, Jun.'86
Red Cross, 1992	Vol. 16:4,IF/RC, Jun.'92
	Vol. 17:48-49, Mar.'93

Proofs, Unlisted, of Curaçao and Neth.

Indies; PvR	Vol. 4:4-8, Sep.'78
PTT Aerogrammes; PvR	Vol. 12:49-50, Dec.'87
PTT and Philately; A Tryptich of Inter-views; FHAR	Vol. 11:50-52, Mar.'87
Recess Printing; Why is it Out?; FHAR	Vol. 8:19, May'83
Revenues, The "Omzetbelasting"; Hager, H.	Vol. 16:38-44, Mar.'92
SAL: "Surface Mail Air Lifted"; FHAR	Vol. 14:22-26, Dec.'89
Stain Removal, from Scotch Tape; Francis, James F.	Vol. 1:64, Jun.'76
Stamp Market of 1977; van Dieten, J.L.	Vol. 3:23-24, (Dec)'77
Stamp Purchasing, Shopping in America; MH	Vol. 16:18-23, Dec.'91
Stamp Thefts, Advice on; PvR	Vol. 1:48, Mar.'76

Stationery Column (all by Frans Rummens)

A.R. Service	Vol. 12:48, Dec.'87
Flevoland	Vol. 11:22, Sep.'86
Moed, Beleid en Trouw Post Cards	Vol. 10:34-37, Dec.'85
New and Discontinued (1991)	Vol. 16:45-48, Mar.'92
Olympic Post Card	Vol. 11:78, Jun.'87
Swimming, Commemorative Card	Vol. 13:12, Sep.'88
55 ct. Beatrix	Vol. 11:42, Dec.'86
1990 Aerogramme	Vol. 15:10, Sep.'90

Surinam

American Bank Note Issue; PvR	Vol. 2"20-23, Dec.'76
Coat of Arms and Flag; FHAR	Vol. 8:67, Apr.'84
Hatterman, Designer Nola; FHAR	Vol. 8:102, Sep.'84
Evangelical Brethren; FHAR	Vol. 8:78-80, Jan.'84
Fiscal Stamp on Cover; PvR	Vol. 5:32-33, Dec.'79
Floating Safe Stamps, The overprinted; FHAR	Vol. 11:77-78, Jun.'87
Internment Camp Postmark; FWJ	Vol. 14:20, Sep.'89
Landmarks; PvR	Vol. 2:38-40, Mar.'77
Perforation Puzzle, Kolff (Batavia); FHAR	Vol. 16:16-17, Dec.'91
Postage Dues of 1911, The Overprinted; Thaelts, V.H.C.J.	Vol. 11:2-3, Sep.'86
Philatelic (?) Curiosum, A; FHAR	Vol. 14:56, Mar.'90
PLA Postmark Reply; FWJ	Vol. 14:70, Jun.'90
Postage Stamps Overprint for Fiscal Use; MacDonald, H. F.	Vol. 6:52-53, Mar.'81
Red Cross Issue; MacDonald, H. F.	Vol. 1:62-63, Jun.'76
Ship Route Markings; FWJ	Vol. 9:2-10, Sep.'84
Ship Route Markings, (Follow up); FWJ	Vol. 9:37, Dec.'84
Ship Route Markings, (Follow up); FWJ	Vol. 9:IRC, Mar.'85
Ship Route Markings, (Follow up); FWJ	Vol. 10:9, Sep.'85
Surinam Colonial Railway; Benders, Dr. A.M.	Vol. 14:32-34, Dec.'89
Unknown Postmark, An; PvR	Vol. 14:52, Mar.'90
William III, 10 ct King; PR	Vol. 12:41-42, Dec.'87
William III Issue; FHAR	Vol. 13:2-5, Sep.'88
William III Issue, additional data; PvR	Vol. 15:82-83, Jun.'91
1892 Provisionals; PvR	Vol. 4:57-58, Jun.'79
1898 Issue; PvR	Vol. 3:59-62, (Jun)'78
1898 10 ct Overprints; Slofstra, Cees	Vol. 12:54-58, Mar.'88
1909 Local Printing; PvR	Vol. 1:40-41, Mar.'76
1912 Provisionals; PvR	Vol. 3:19-21, (Dec)'77
1925-26 Provisionals; MacDonald, H. F.	Vol. 4:11-14, Sep.'78
1930 6 on 7 1/2 c. Overprint; FHAR	Vol. 16:12-14, Dec.'91
1959 High Values; PvR	Vol. 14:70-74, Jun.'90
#68 Proof; PvR	Vol. 2:14, Sep.'76
#111; the 3 on 5 ct Overprint; FHAR	Vol. 11:26-32, Dec.'86
#183-186 First Day Cachet; FWJ	Vol. 9:19, Sep.'84
#210; FHAR	Vol. 7:7, Sep.'81
#212; FHAR	Vol. 7:23-25, Dec.'81
#213; MacDonald, H. F.	Vol. 1:4-7, Sep.'75
#244; First Day dates; FWJ	Vol. 9:19, Sep.'84
#245; de Mots, Garrett	Vol. 3:31, (Dec)'77
#245; (Follow up); FHAR	Vol. 8:48-53, Oct.'83
#246; FHAR	Vol. 8:11-13, May'83
#248; MacDonald, Harold, F.	Vol. 4:60, Jun.'79
#248 (Follow up); FHAR	Vol. 8:34-35, Aug.'83
#248 (Follow up); Bridges, Eric, J.W.	Vol. 8:68, Jan.'84
#284, The 1 Cent Overprint; FHAR	Vol. 13:18-20, Dec.'88
Airmail #23, 26; PvR	Vol. 5:28-30, Dec.'79
Airmail #25, 26 Errors; PvR	Vol. 7:30-31, Dec.'81
Airmails, 15 and 30 ct of 1972; PvR	Vol. 10:58-59, Mar.'86

Thinking Out Loud (Editorial Items) (all by Paul van Reyen)

	Vol. 11:91-92, Jun.'87
	Vol. 12:51-52, Dec.'87
	Vol. 12:63-64, Dec.'87
Holiday Issue	Vol. 14:53-54, Mar.'90
Maakwerk	Vol. 14:16, Sep.'89
Nitty-gritty and the Dutch PTT	Vol. 16:14-5, Sep/Dec.'91

Trends (all by Frans H.A. Rummens)

The Bogus Stamps	Vol. 12:43, Dec.'87
Fighting the NVPH Specials	Vol. 10:66, Mar.'86
Franking Label Usage	Vol. 9:61, Sep.'84
Is the PTT Post Cheating Us?	Vol. 13:27-29, Dec.'88
Is the PTT Selling Junk Philately?	Vol. 11:68-69, Mar.'87
Private Advertising on Dutch Stamp Sheets	Vol. 9:61, Mar.'85
Typewriter Fund,	Vol. 9:19, Sep.'84
U.P.U. Color Codes, 100 Years of Com-	
pliance; van Rijsdam, J.	Vol. 17:29-31, Dec.'92
Windmills, Dutch; PvR	Vol. 3:24-26, (Dec)'77
Your Family on Stamps, Part I;	
Kerkhoven, Constant L.	Vol. 7:12-13, Sep.'81
Your Family on Stamps, Part II;	
Kerkhoven, Constant L.	Vol. 7:55, Mar.'81

THE "LANGSTEMPEL" ON THE NETHERLANDS 1852 EMISSION

by Fred L. Reed

In his book *AFSTEMPELINGEN EMISSIE 1852 VAN NEDERLAND*, A.M.A. van der Willigen counts about 540 *langstempels* (line cancels) used between 1850 and 1866; about 200 of these he found used as cancellations on stamps of the 1852 issue, often in combination with regular post marks such as halfround town A, B, and C or framed FRANCO. Only in three special circumstances were *langstempels* authorized for obliteration of stamps, as were also the syncopated, the halfcircle and the unframed FRANCO, all of these for sub post offices (*hulpkantoor*). That is why they are correctly listed "z" (for *zeldzaam* = rare) in the *NVPH Speciale Catalogus* under the section *Stempels Nederland*. It is contradictory and misleading to find them also listed as normal cancellations (NVPH, under 1852 emission).

In contrast to the halfround town post marks where unknown strikes are very few, for *langstempels* the known examples are few and in many instances they are rare or very rare. Often there are only one or two recorded examples. Therefore it is irrelevant to provide a column for "unknown"; it is better to list the known ones only. Of necessity such a listing will be subject to revisions as more data come to light.

A reasonably accurate picture can be obtained from the study of collections and auction catalogues. Duplication (in the sense of encountering the same stamp more than once) is unavoidable, but many of these have been spotted and eliminated in the counting. Because of the comparatively large number of *langstempels* of which only very few examples are recorded, only 12 value levels have been used, ranging from 40 for the most common to RRR for the rarest, the numbers being equivalent to 1993 Dutch guilders. To keep the record straight, there was no discrimination in counting on the basis of the the quality of the stamp, strike or completeness of cancellation, as long as the name assignment was unambiguously established. It is true, however, that such factors do play a role when a particular item is evaluated.

Catalogue descriptions, especially when not corroborated by a photo, are sometimes questionable. This is even true when the lot is accompanied by a photo. A case in point is lot No. 1256, auction No. 385 of Van Dieten (the "Klink" sale). It was described as ZWEELOO, which it is most certainly not. A dozen other possibilities offer themselves, but none could be confirmed and therefore the item has been left out of the present listing.

On the other hand, there are some *langstempels* mentioned in Van der Willigen's book and in Korteweg's "300 Jaar Postmerken van Nederland", which I have not seen, but which have nevertheless been included in the present list.

All *langstempels* with Egyptian letters that have been recorded as found on stamps, have been included, mostly as Korteweg No. 61, but sometimes also as K 15, 19, 23, 30A, 46, or 74. It is often difficult to assign the correct type, as in the case of DELFT, which could be K 15, 19, 27, or 46. Korteweg believed it to be K 46. Van der Willigen has

agreed that this postmark on stamps – which mostly occurs in combination with a town post mark – is NOT a forgery, as he had originally thought. Apparently, all post marks found in combination with DELFT are from places along the two railway companies the *Nederlandsche Rhyn* and the *Hollandsche Spoorweg*.

Of two recorded 5 cent copies MAARTENSdyk and St. MAARTensdyk, the identity in style, size and spacing of the letter indicates that both cancels are from St. MAARTENS DYK. There is also strong evidence that two recorded copies, one each of 5 ct and 10 ct, with SOEST are in fact from SOESTERBERG, the lettering being identical to K 41. (Korteweg page 104). Not listed here are *langstempels* with grotesk letters which are very few and extremely rare.

The listing does provide a key to the scarcity of *langstempels*. Combination with town- or framed FRANCO post marks are listed but counted only when they are they are unusually rare or occur in combination only, in which case they are marked ** after the valuation. In most other instances their existence is indicated by a footnote * or explained under "remarks". As the supplemental post mark is often dominant, discretion is suggested for the valuation. The type and condition of the stamp has also to be taken into account, as well as the completeness and neatness of the *langstempel*. Due to their length, many *langstempels* with a large number of letters can only be found complete on piece. Then they command a large premium, about 3 to 5 times the value of an off-paper stamp. As a rule of thumb incomplete *langstempels* should be devalued by subtracting the number of missing letters, divided by the total number of letters, times minus 100%. For example, for goEDEREEdede the 4 missing letters divided by 10, times -100% equals -40%.

All *langstempels* recorded in color are so indicated.

Symbols:

- ** = *langstempel* recorded only in combination with tpm or FR
- * = additional combinations with tpm or FR (not counted in evaluation)
- FR = framed FRANCO
- K = Korteweg (*300 Jaar Postmerken*)
- NPV = *Nederlandse Postzegelveilingen*
- Rdk = Rietdijk (Auctions)
- rec = recorded
- rep = reported
- tpm = town post mark
- vdW = Van der Willigen
- vD = Van Dieten (Auctions)

Hulpkantoor	5 cent	10 cent	15 cent	Remarks	Hulpkantoor	5 cent	10 cent	15 cent	Remarks
Aalsmeer	500				Druten	400			
Aalten	RRR				Ede	RR			
idem in blue	RR	RRR			Eemnes	RRR			see Baarn(-Eemnes)
Aardenburg	RR	R			idem in blue	RRR			
idem in blue	RRR	RRR			Eibergen	400			
Abcoude	100*	R*			Ellecom	RR			
Akkrum	500				Emmen	RRR*			* with Koevorden
Alblasserdam	RRR	RRR**		** with Schoonhoven B	Enter	RRR			
Alphen (Geld.)	500				Epe	RR			
Ammerzoden	RR				Ermelo	R			
St Anna-Parochie	RR				Etten	RRR			
Appeltern	R				Eysden	RRR*	RRR**		** FR
Arum	RRR				Fynaart	RR			
Asperen	RRR				Gardenen	RRR*1	RRR*2		*1 with Apeldoorn C *2 with Amersfoort C
Asten (in blue)	RRR			vdW listed in black	Geldermalsen	RRR	RRR		
Axel	500				Gemert	500	RRR		
Baambrugge	RR**			** with FR	Gennep				NPV Oct '90 illegible
Baardwyk				rep vD 419 lot 1117	Giessendam	R			
Baarn	RRR			see Baarn-Eemnes, listed in blue by vdW	Goedereede	500			
Baexem	RRR				idem in red	RR			
Balk	200*			vdW mentions 3 types	Gorredyk	40			
idem in red	RRR			vD 385 lot 1048	'Graveland	RRR			
Barneveld	500				'sGravendeel	RR			
Beek	500				'sGravesande (in blue)	RRR			
Beekbergen (in blue)				one unclear strike	Groede	500			
Beesterzwaag	500	RRR			Groenlo	500			
Beilen	RRR				Grootegast	RRR	RRR**		** + FR
Bemmel	RRR				idem in blue		RRR**		** + FR
Bennekom	400*	300*	RRR	* add. FR	Grypkerk	R			
Berchem	RRR				Gulpen	RR			
Bergeyk	RRR				Haaksbergen	RR			
Bergum	150	RRR			Haarlemmermeer	70			
Beugen	RRR				Hallum (in blue)	RRR			
Blokzyl	200	RRR	RRR***	with Meppel A	den Ham	RRR			
Borculo	R				Hardegaryp	100*	RRR*		* + tpm
Borne	RR				Hardenberg	RR			
Boskoop (in red)	RRR				idem in blue		RRR		
Boven Knype	RRR				Harderwyk	RRR			
Boxtel	150				Harmelen	200*	400*		* + Utrecht or FR
Breskens	RR				Hasselt	RRR			
Brock in Waterland	R				Havelte				RRR**** + Meppel A
Brouwershaven	RRR				Heeg	RR			
Brummen	200*				idem w. Sneek or FR	40			
Buiksloot	RRR				Heenvliet	R			
Buitenpost	RR	RRR	RRR*	* with Groningen A	'sHeerenberg	200			
Buitensluis		RRR*		* with Dordrecht C	Heesch	RRR			
Buren	400*	RR*			Heinenoord	RRR			
Charlois (in blue)	RR				idem in blue	RRR*	RRR*		* w. Oud Beyerland A, B, or C
Colynsmaat	R			vdW listed in blue	Heino	RR			
Cortgene	500				Hemmen	RRR			
Dalen	RRR*				Hengelo	200			Incl. multiple strikes (2 to 4)
Dedemsvaart	RRR				idem in green	RRR			
Delden	RRR	RRR			Hengelo Gd.	RRR			
DELFT	RRR				Herkingen	RRR			
idem with tpm	400	400	RRR	K 15 or 27 or 46	Hillegersberg	RR			
Deurne	RRR				Hillegom	40	40	400	
Didam	RRR				Hindelopen	R			
Diemen				K 75 (page 179)	Holten	RRR			
Diepenveen	RRR				Holwerd	300*	RRR*	RRR*	* Dokkum A or FR. ** One 15 c w. Dokkum A
Dieren	RR				idem w. K 61 NES	RRR			
Dieverbrug	RRR*	RRR**			idem in blue	RR*			
Dinteloord	RRR				Hontenisse	RRR			
Dinther (in blue)	RRR**	RRR**		** w. 'sHertogenbosch	Hoogeveen	RRR			
Dinxperlo	RRR			vD 458 DINX....	Hoogwoud	RRR			
Doetinchem	300*	RR*			Horst	RR			
Domburg		RRR			Houtryk enz. FRANCORR	RRR			
Dongen	RRR								
Dragten	70								
Drie(bergen) + FR	(RRR)								

	5 cent	10 cent	15 cent	Remarks	Hulpkantoor	5 cent	10 cent	15 cent	Remarks
Hulpkantoor									
Huissen	RRR				Ommen	RR			
Jaarsveld	RR				Ooltgensplaat	RRR			
de Joure	RR				Oostburg	R			
idem in blue	RRR				Oosterhesselen	500			RRR**** + FR vD 458 lot 630
					Oosterwolde	40			
Kamerik				K 74 (page 180)	idem in blue	100			
Kapelle	RRR				idem in red	RRR			
Keppel	200				Oost Souburg	RRR			
Klaaswaal	RRR				Oostzaan	RRR			
Klundert	RRR				Ouderkerk	RR			
Kollum	RRR				Oudeschoot	RR			
Koog aan de Zaan	RRR				Oude Wetering	RRR			
Korendyk	RRR				Over-Asselt	RRR			NPV May '74
Koudum	40	200			Papendrecht	RRR	RRR		
Krabbenidyke	RRR				Peize	RRR			
Krimpen aan de Lek	RRR				Pernis	RR			
Krimpen (a.Y.)	RR				Puttershoek	RR			
Kuinre	RR								
Kuyk	RRR				Raalte	RRR**			** + illegible tpm
					Rhenen	300	400		
de Lage Zwaluw	RR				id. + tpm or FR	70	100		
Langweer	RRR				Rhoon	RR			
Laren	RRR			K 74	idem in blue	RR	RRR		
de Leek	RR				Roden	RRR			
Leende	RRR				Ryp	RRR			
Lekkerkerk	RRR				Ryssen	RRR**			** + FR
Lichtenvoorde	RR								
Lienden	RRR	RRR	RRR	K 74	Sappemeer	RRR			
idem in blue	RR	RRR	RRR	considered forgeries by Mr. J.L. van Dieten and others	idem in blue	RRR			
					Sassenheim	RRR			RRR
Lisse	400	RRR			Scheemda	RRR			
idem + FRANCO	150	R			idem in blue	RR			
Lith	R	RRR**		** w. 'sHertogenbosch rep. Rdk + FR	Scherpenisse	RR			
Loenen	?				Schiedam FRANCO	RRR	RRR		K 30A
Loosduinen	R				Schoondyke	RR	RRR		
Loppersum	RRR				Schoorldam	RRR*			* rec. vdW
Lunteren	500*	500			Schyndel	R			
Luyk	RRR			K 27	Silvolde	RRR			
					Sliedrecht	500			
St. Maartensdyk	RRR				Slochteren	RRR			
Makkum	500	RRR			Sloten	250*	RRR*		* Sneek, Heerenveen or
Marum	R				Slyk-Ewyk	RRR			
Meersen	RRR				Smilde	150			
Megen	RR				Soesterberg	RRR	RRR		
Middelharnis	RRR				Someren (in blue)	?			vD 458, very poor strike
Middenbeemster	RRR				Sommelsdyk	RRR			
Midwolde (in blue)	RRR	RRR			idem in blue	RRR			
Milligen	RRR	RRR**		** + FR	Stad aan 't Haringvliet	R			
Monster	RRR				Stadskanaal	RR			
idem in blue	500	RRR			Standaardbuiten	RRR*	RR*		K 74
Mook	RRR				de Steeg (in green)	RRR			
Muiden	RR				Steenderen	RRR			
Muidenberg	RRR								
					Tegelen	RRR**			** FR
Naaldwyk	RRR*	R**		*** w. 'sGravenhage C	Terschelling	RRR			* also one copy + TEXEL (K 41) RRR
Neede	400				Texel (large)	R			K 41
Neerlangbroek	RRR				Texel (small)	R			K 61
Nes	RRR				Tuil	RRR			K 74
id. w. Dokkum or FR	70	100			Twyzel	RR*	RRR*		K 74
Nieuw Beyerland	RRR								
Nieuw Lekkerland	R				Uden	RRR			
Nieuwolda (in blue)	RRR				idem in blue	RR			
Nieuwveen	RRR				Uithoorn	300			
Noordwolde	R				Uithuizen (blue)	RR			
Nunspeet	RR				Ulrum	RRR	RRR		
Nyverdal	150				Usquert				K 74, also known on stamp
Oedenrode	RRR				Valkenswaard	RRR			
Oldebercoop	150				Varsseveld	400			
Oldemarkt	RRR			rec. vdW	Veenendaal	RRR			
Olst	RRR				Venray	RR			

Hulpkantoor	5 cent	10 cent	15 cent	Remarks
Vierlingsbeek	RR			
Vlagtwedde	RR*			
Vlieland	RRR*			* rec. vdW
Vollenhoven	500			
idem in blue	R			
Voorburg	RRR			
Voorschoten (red)	RRR**			** + Leiden (red)
Voorst		RRR*		* + FR
Vorden	R			
Vught (in blue)	RRR			
Wamel	RRR			
idem in blue	RRR			
Warmond	RR	RRR		
idem + FRANCO	40	70	400	
Waspik	RRR			
Wateringen	500			
idem in blue	RRR			
Well	RRR			
Werkendam		RRR		
idem w. add. pmk	RR	RRR		
Westzaan	200*			
Wildervank	RRR			
Winkel	RRR			
Winsum	RR	RRR		
Wissekerke	500			
Wognum	100			
Wolphaartsdyk	RRR			
idem in blue	RRR			
Wolvega	200*			
Wommels	RR			
Workum	150			
idem in blue	RR			
Woubrugge	RRR**			** FR
Woudsend		RRR		listed vdW
Wychen	RRR			
Wyhe	RRR			
Yerseke	RR			
Ysselstein	RRR*			K 41
idem in blue	RRR			
Yzendyke	RR			
idem in blue	RRR			
Zaamslag	RRR*			
Zaandyk	R			
't Zandt	RRR			
Zeddam	RR*	RRR**		** w. Doesborgh B
Zelhem	400			
Zoelmond	RRR			
Zuid-Beyerland	RR*	RRR**		** w. Oud-Beyerland C
idem in blue	RRR**			** w. Dordrecht B
Zuidbroek	R			
Zuidhorn	400	RRR		
Zuidwolde (blue) + FR		?		K not listed with Egyptian letters
Zwartsluis	R			
Zwyndrecht	RRR			

BOOK REVIEWS

Nederlandse Postzegels van 1991 (The 1991 stamps of the Netherlands). Published by PTT Post BV (1992), 104 pp, color illust., 7x10" soft cover. Code 92-12, ASNP price \$ 40.00. PTT Post Filatelie price Hfl. 55,-, order number 920017.

This book is the 22nd in the series on the background of the stamps issued by the Dutch PTT. However, it is also the first of a new series, with quite a few fundamental differences. First of all, these books will from now on be available to the public at large. The first 19 books were available only by subscription, whereas Nos 20 and 21 were only available as "relations gifts". Now it is PTT Filatelie in Groningen who will distribute the books. If you have already an account with PTT Filatelie, then the cheapest way to obtain a copy is to write to them, asking them to send one and charge it against your account. If you don't have an account, ask a friend who does. Failing all else, the ASNP should be able to get it for you, but the price is steep and there will be a long waiting period.

The second major change is that your purchase will include a complete set of the 23 stamps issued in 1991. The book is simply not available without this year collection. There is a reason for this in that there are places reserved in the book where the stamps are supposed to be mounted. This is a nice gesture, of course; real stamps are always nicer than the best of reproduction. However, it is most certainly also a sales gimmick.

Another change is that no longer all the special cancels are reproduced as used to be the case in all previous books in this series. The category of First Day Cancels is still represented, though, and in a very special fashion. Preceding each page with real stamps, there is a page that has a window so that the stamp on the next page can be seen. The window is covered with a glassine-like material and on top of this one finds the First Day Cancel.

Other changes may or may not be permanent. The text with each issue, for example, is *verbatim* taken from the Pro-Fil announcement sheets (until recently these were available at all post offices at no cost).

Of all the stamps, a complete printing sheet is shown in full color. This will give the reader an idea on what these printing sheets look like and what is cut away, once the counter sheets are produced from these. In actual fact, the sheets shown are the so-called "control sheets" with all the signatures required for final approval. There is a short introduction (by Paul Hefting) but nothing like the essays of yesteryears.

The December discount stamp is represented by a single stamp; indeed the year packet is the only way to obtain a single stamp — as opposed to a complete sheetlet — out of the hands of the PTT. The last three pages are devoted to the new "change of address card" that came out in 1991. If you want, you may paste in a real copy, but this time it is not provided, so it will have to be your own.

Once more, and this time in spite of the hefty price, highly recommended.

F.R.

REVERSE ALPHABETICAL LISTING OF NETHERLANDS LARGE ROUND CANCELS

by Hans Kremer

Main Offices

Breda	IJzendijke	Harderwijk	Makkum
Scheemda	Brielle	Oisterwijk	Dokkum
Gouda	Zwolle	Beverwijk	Renkum
Wolvega	Heerle	Vreeswijk	Workum
Nieuwepekela	Borne	Winterswijk	Kollum
Anna Paulowna	Epe	Bloemendaal	Akkrum
Valkenburg (Lb.)	Joure	Veenendaal	Ootmarsum
Leur (N.B.)	Lisse	Roosendaal	Loppersum
Willemstad	Bruinisse	Rozendaal	Hilversum
Barneveld	Raalte	Stadskanaal	Bussum
Varsseveld	Grave	Oldenzaal	Leiden
Simpelveld	Steg	Nijverdal	Ijmuiden
Neder-Hardinxveld	Culemborg	Veghel	Delden
Ede (Gld.)	Terschelling	Kerk-Driel	Naarden
Velp (Gld.)	Geertruidenberg	Tiel	Leeuwarden
Hees (Gld.)	Hardenberg	Winkel	Woerden
Elst (Gld.)	Valkenberg	Zaltbommel	Coevorden
Vlieland	Terborg	Oud-Gastel	Koevorden
's Graveland	Elburg	Bokstel	Heusden
Hoek van Holland	Middelburg	Boxtel	Uden
Oud-Beijerland	Tilburg	Kaatsheuvel	Hoogeveen
Dirksland	Voorburg	Axel	Heerenveen
Hoogezand	Doesburg	Texel	Vriezenveen
Sas van Gend	Oostburg	Den Burg (Texel)	Overveen
Purmerend	Osch	Valkenburg (L.)	Roelof-Arendsveen
Helmond	Oudenbosch	Ammerstol	Waddinxveen
Warmond	's Hertogenbosch	Delfzijl	Schagen
Roermond	Lobith	Blokzijl	Nijmegen
Valkenswaard	Noordwijk (Z:H:)	Edam	Vlaardingen
Sittard	Rijswijk (Z.H.)	Appingedam	Harlingen
Bolsward	Alfen (Z:H:)	Schiedam	Wageningen
Frederiksoord	Alphen (Z:H:)	Zaandam	Scheveningen
Kerkraede	Venraai	Onderdendam	Groningen
Neede	Oosterbeek	Veendam	Gendringen
Goedereede	Sneek	Monnickendam	Wateringen
Enschede	Krimpen a/d Lek	Monnikendam	Vlissingen
Heemstede	Medemblik	Werkendam	Dongen
Wijk bij Duurstede	Waspik	Nieuwendam	Amerongen
Smilde	Balk	Leerdam	Driebergen
's Gravenzande	Wildervank	Alblasserdam	Eibergen
St Oedenrode	Beek en Donk	Amsterdam	Steenbergen
Heerde	Raamsdonk	Rotterdam	Zevenbergen
Lichtenvoorde	Lekkerkerk	Woudrichem	Haaksbergen
Zierikzee	Nijkerk	Gorinchem	Zutphen
Katwijk aan Zee	Gorredijk	Doetinchem	Ginneken
's Gravenhage	Koog Zaandijk	Lochem	Tegelen
Wijhe	Sloterdijk	Arnhem	Brukelen
Overschie	Cuijk	Haarlem	Tholen
Krommenie	Naaldwijk	Hattem	Heerlen
Ierseke	Waalwijk	Sassenheim	Emmen
Krabbendijke	Steenwijk	Hillegom	Ommen
		Bergen op Zoom	Brummen
		Bergum	Vlijmen
			Vianen

Rhenen	IJsselstein	Aalsmeer	Maastricht
Loosduinen	Ravenstein	Boxmeer	Vught
Gulpen	Baarn	Kralingseveer	Lobit
Kampen	Winsum (Grn:)	Wormerveer	De Bilt
Dieren	Apeldoorn	Franeker	Oirschot
Huisen	Doorn	De Lemmer	Oorschot
Velsen	Hoorn	Oudewater	Dedemsvaart
Assen		Deventer	Klundert
Huissen	Hengelo	Monster	Zundert
Maarssen	Almelo	Goor	Weert
Meerssen	Groenlo		Hansweert
Rijssen	Venlo	Goes	Gemert
Dragten	Borculo	Middelharnis	Montfoort
Drachten	Markeloo	Sluis	Amersfoort
Aalten	Almelo	Maassluis	Zandvoort
Winschoten	Groenloo	Hellevoetsluis	Soest
Voorschoten	Venloo	Zwartsluis	Zeist
Asten		Vaals	Olst
Zetten	Gennep	Breskens	Hulst
Putten	Velp	Oss	Buitenpost
Druten	Boskoop		Horst
Brouwershaven	Geldrop	De Bildt	Oosterhout
Bodegraven	Leiderdorp	Nunspeet	
Eindhoven	Weesp	Delft	Hengelo (Ov:)
Schoonhoven	Rijp	Echt	
Huizen		Sliedrecht	Grouw
Enkhuizen	Alkmaar	Zwijndrecht	
Uithuizen	Zevenaar	Dordrecht	Venraij
Heijthuisen	Helder	Mijdrecht	
Neuzen	Sappemeer	Utrecht	
Ter Neuzen	Haarlemmermeer	Loenen a/d Vecht	

Reverse Listing of Netherlands Large Round Cancels (Continued)

Sub- and Branch Offices

Erica	Nieuwendijk (N:B:)	Loenen (Gld.)	Broek in Waterland
America	Andel (NB:)	Laren (Gld.)	Zuid-Beijerland
Nieuwolda	Alphen (N.B.)	Geesteren (Gld)	Nieuw-Beijerland
Steggerda	Beers (NB.)	Winsen (Gld.)	Maasland
Jubbega	Elshout (N.B.)	Etten (Gld.)	Midsland
Oudega		Putten (Gld.)	Dirksland
Parrega	Zandvoort-Bad	Wezep (Gld.)	Sir Jansland
Makinga	Afferden (Gld.)	Deil (Gld:)	St Philipsland
Warga	Echteld	Hengelo (Gld.)	Nuland
St Nicolaasga	Hollandscheveld	Hengelo (Gld)	Nijland
St Johannesga	Varseveld	Gent (Gld)	Kadzand
Minnertsga	Zegveld	Aalst (Gld.)	Ovezand
Augustinusga	Simpelveld	Oosterhout (Gld.)	Loon op Zand
Appelscha	Wapenveld	Oudeschild	Heinkenszand
Anna-Paulowna	Schinveld	Overschild	Woudsend
Beerta	Herveld	Ruinerwold	Eeneind
Nieuw-Beerta	Lemelerveld	St Annaland	Zoelmond
	Gronsveld	Zuidland	Bonnermond
Schaesbergh (Lb:)	Warnsveld	Vreeland	1ste Exploermond
Kessel (L.B.)	Jaarsveld	Zeeland	2de Exploermond
Wel (Lb:)	Scherpenzeel (Gld.)	Nes op Ameland	Urmond
Afferden (L:B:)	Deil (Gld.)	Rilland	Lexmond
Stein (L.B.)	Alfen (Gld.)	Hoek van Holland	Birdaard
Montfort (Lb.)	Beuningen (Gld:)	Mijnshe erenland	Ternaard
Beek (Limb.)	Alphen (Gld.)	Baarland	Schraard
Beek (N:B)	Megchelen (Gld.)	Nieuw Lekkerland	Dodewaard

Heerhugowaard	Heerde	Spijkenisse	Balkbrug
Wieringerwaard	Lage Mierde	Scherpenisse	Schagerbrug
Goudswaard	Suawoude	Stavenisse	Burgerbrug
Aduard	Zuid Scharwoude	Colmschate	Diemerbrug
Tjalleberd	Noord Scharwoude	Uffelte	Glanerbrug
Hansweerd	Mummerwoude	Gasselte	Echtenerbrug
Schoonrewoerd	Zoeterwoude	Havelte	Echterbrug
Tjerkwerd	Renswoude	De Lutte	Scharsterbrug
Holwerd	Ee	Putte	Dieverbrug
Ferwerd	Westerlee	Oldenhove	Nieuwerbrug
Jorwerd	Maasbree	Vollenhove	Sint-Maartensbrug
Kimswerd	Wijk aan Zee	Lage-Zwaluwe	St Maartensbrug
Rauwerd	Noordwijk aan Zee	Hooge-Zwaluwe	
Dinteloord	Zandvoort-Passage	Loenen o/d Veluwe	Babberich
Schoonoord	Kokange	Heeze	Esch
Heineroord	Boertange	Maarheeze	Het Zand (N.H.)
Velseroord	Wemeldinge	Gilze	De Heide (N.H.)
Nieuweroord	Clinge		Bergen (N.H.)
Frederiksoord	Ezinge	Bleskensgraaf	Sloten (N.H.)
Goidschalksoord	Oude Tonge	Molenaarsgraaf	Kerk-Avezaath
Willemsoord	Nieuwetonge	Kortenhoef	Lith
Rijsoord	St Anna-Parochie	Wervershoof	Nuth
St Willebrord	St Jacobi-Parochie		Valkenburg (Z.H.)
Beesd	Vrouwen-Parochie	Zwaag	Koudekerk (Z.H.)
Hoogwoud	Lieve-Vrouwen Parochie	Langezwaag	Rijswijk (Z.H.)
Nibbikswoud	Overschie	Kollumerzwaag	Berkel (Z.H.)
Westwoud	Borger-Compagnie	Beetsterzwaag	Zeven huizen (Z.H.)
Oostwoud	Drachtster-Compagnie	Overslag	
	Rokanje	Heeg	Ravenswaai
Made	Tijnje	De Steeg	
Hoogmade	Wissekerke	Haarsteeg	Baak
Oldeholtpade	's Heer Arendskerke	Sprang	Gouderak
Amstenrade	Tilburg-Goirke	Vogelenzang	Oud-Schoonebeek
Wedde	Oudehaske	Hoorn (Terschelling)	Sambeek
Onstwedde	Scharendijke	De Hoorn (Terschelling)	Hilvarenbeek
Goedereede	Schoondijke	sterdam-Tentoonstelling	Eerbeek
Neede	Rottevallē	oningen-Tentoonstelling	Giesbeek
Groede	Grevelduin-Capelle	Oudewetering	Groesbeek
Harkstede	's Grevelduin-Capelle	Rijpwetering	Vierlingsbeek
Haamstede	Moerkapelle	Schiermonnikoog	De Leek
Eefde	Oostkapelle	Hardenberg	Reek
Hoogerheide	Noordwelle	Nederhorst den Berg	Krimpen a/d Lek
Spekholzerheide	Haarle	Woudenberg	Hoek
Ameide	Oerle	St Odilienberg	Mookhoek
Eelde	Goirle	s Heerenberg	Bergschenhoek
Wapenvelde	Kortgene	Muiderberg	Zevenbergschenhoek
Rolde	Oene	Schaesberg	s Heerenhoek
Silvolde	Philippine	Hillegersberg	Puttershoek
Schildwolde	Linne	Drieborg	Zuidbroek
Bellingwolde	Nijehorne	Burg	Noordbroek
Terwolde	Oostvoorne	Wijk en Aalburg	Oldebroek
Finsterwolde	Deurne	Valburg	Bennebroek
Oudelande	De Knijpe	Bergen (Limburg)	Grootebroek
Zuidzande	Veere	Domburg	Neerlangbroek
Kloosterzande	Waalre	Aardenburg	Benningbroek
Leende	Tongelre	Waardenburg	Abbenbroek
Opende	Wijlre	Doornenburg	Leerbroek
Gemonde	Kuinre	Batenburg	Donkerbroek
IJselmonde	Schore	Rozenburg	Hensbroek
Bunde	Blesse	Rijnsburg	Westbroek
Liempde	Lisse	Oostburg	Bergeik
Lamswaarde	Nisse	Oost-Souburg	Bunnik

Lopik	Nijverdal	Sluiskil	Blaricum
Varik	Bladel	Mil	Heukelum
Blerik	Hedel	Enumatil	Achlum
Kamerik	Schijndel	Well	Hallum
Hemrik	Budel	Mill	Hellum
Maurik	Nes (Westdongeradeel)	Foxhol	Hollum
Soerendonk	's Gravendeel	Roodeschool	Sevenum
Mook	Panheel	Termunterzijl	Wognum
Oudkerk	Roggel	Oudebildtzijl	Deinum
Oldekerk	Kethel	Koudekerke (ZL.)	Arum
Streefkerk	Driel	Westdorpe (Zl.)	Tzummarum
Hoogkerk	Velddriel	Koudekerk (ZL.)	Bierum
Almkerk	Kerk-Driel	St Maartensdijk (Zl.)	Sexbierum
Giekerk-Oenkerk	Lienden (Bij Tiel)	Nieuw-Namen (Zl.)	Manrum
Ridderkerk	Eck en Wiel		Burum
Meerkerk	Ek en Wiel	Obdam	Driesum
Ouwerkerk	Bakel	Zeddam	Heelsum
Oosternijkerk	Brakel	Didam	Irnsrum
Westerbork	Volkel	Dubbeldam	Marsum
Urk	Roswinkel	Leidschendam	Witmarsum
Schaijk	Arkel	Stellendam	Leersum
Kwadijk	Borkel	Volendam	Loppersum
Poeldijk	Wamel	Ilpendam	Ottersum
Broek Op Langendijk	Bemmel	Giessendam	Rossum
Hazerswoude (Rijndijk)	Den Bommel	Muntendam	Marssum
Odijk	Maasbommel	Nieuwendam	Hantum
Oosteinderdijk	Dreumel	Spaarndam	Middelstum
Kinderdijk	Vrijhoeven-Kapel	Zwammerdam	Scharnegoutum
Spierdijk	Blauwkapel	Nieuw-Amsterdam	Huizum
De Moerdijk	Keppel	Maasdam	Roordahuizum
Sommelsdijk	Laag-Keppel	Heerjansdam	Bozum
Honselersdijk	Oudkarspel	Drogeham	Tzum
Wolphaartsdijk	Hoogkarspel	Kolham	
Ellewoutsdijk	Bovenkarspel	Blankenham	Oostzaan
Westgraftdijk	Steensel	Blijham	Westzaan
Puiflijk	Eersel	Kedichem	Vrijenban
Nieuwkuyk	Gorsel	Zuilichem	Arcen
Randwijk	Gassel	Beusichem	Meeden
Veldwijk	Liessel	Berchem	Uithuistermeeden
Baardwijk	Gorsel	Zelhem	Rheden
Ewijk	Reusel	Houthem	Lange Ruigewiden
Slijk-Ewijk	Capelle a/d IJsel	Alem	Schipluiden
De Wijk	Ouderkerk a/d IJsel	Dalem	Muiden
Schalkwijk	Nieuwerkerk a/d IJsel	Baaksem	Genemuiden
Stolwijk	Krimpen a/d IJsel	Wessem	Arnemuiden
Stompwijk	Wesepe (Overijsel)	Diepenheim	Leimuiden
Ommelanderwijk	Oud-Gastel	Windesheim	Elden
Haulerwijk	Moergestel	Ellecom	Velden
Heeswijk	St Michiels-Gestel	Bennekom	Westeremden
Bleiswijk	Ouderkerk a/d Amstel	Blaricum	Roden
Sleeuwijk	Aarle-Rixtel	Castricum	Ammerzoden
Reeuwijk	Kapelle (Z.Bevel.)	Weidum	Heerewaarden
	Axel	Menaldum	Wierden
Haarlem (Bloemendaal)	Oudeschild (Texel)	Oudemirdum	Netterden
Voerendaal	Oosterend (Texel)	Koudum	Walsoorden
Poortugaal	De Waal (Texel)	Boornbergum	Vorden
Musselkanaal	De Cocksdoorp (Texel)	Beetgum	Opheusden
De Waal	Meijel	Mantgum	Leusden
Zwartewaal	Duizel	Brantgum	Eijsden
Klaaswaal	Twijzel	Pingjum	Uden
Tulle en 't Waal	Wehl	Anjum	
Berg en Dal	Piershil	Cornjum	

To be continued